

MATERIAL & FINISH:

- 1 BODY: SEE TABLE
- 2 CENTER CONTACT: BERYLLIUM COPPER ALLOY, GOLD PLATED
- 3 LOCK WASHER: PHOSPHOR BRONZE, GOLD PLATED
- 4 FASTENING NUT: SEE TABLE
- 5 INSULATOR: PTFE

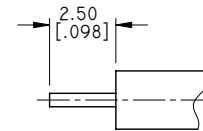
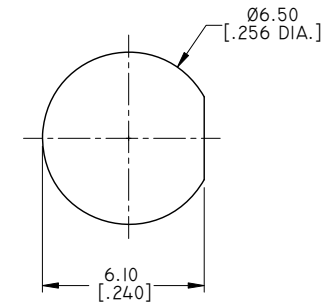
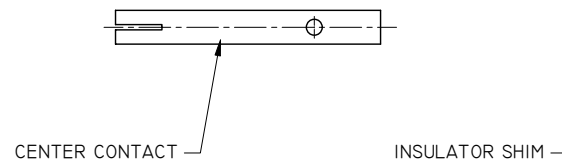
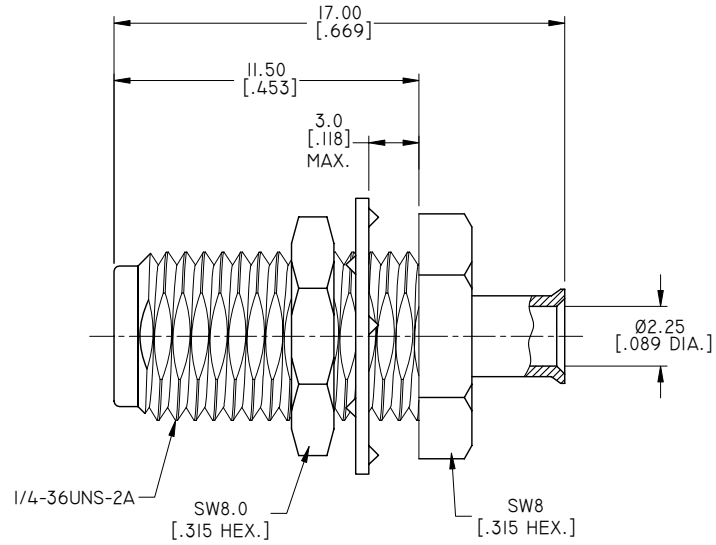
ELECTRICAL DATA:

- 1 IMPEDANCE: 50 Ω
- 2 FREQUENCY RANGE: DC~18 GHz

ENVIRONMENTAL DATA:

- 1 TEMPERATURE RANGE: -55°C~+125°C
- 2 2011/65/EU(RoHS) AND 2015/863/(RoHS): COMPLIANT
- 3 1999/45/EC(REACH): COMPLIANT

REVISIONS			
REV.	DESCRIPTION	DATE	APPROVED
C	OUTLINE DRAWING CHANGED	07/10/12	J. QU
D	INSULATOR SHIM ADDED	09/10/18	J. QU



TABLE

PART NO.	PART	MATERIAL	FINISH
ANO 2112-1022	BODY	BRASS	GOLD
	FASTENING NUT	BRASS	GOLD
ANO 2112-1022-1	BODY	STAINLESS STELL	GOLD
	FASTENING NUT	STAINLESS STELL	PASSIVATED

CABLE STRIPPING DIMENSIONS

DRAWN X. B. YANG	DATE 09/10/18	
CHECKED L. YANG	DATE 09/10/18	
APPROVED J. QU	DATE 09/10/18	
<small>UNLESS OTHERWISE SPECIFIED DIMENSIONS ARE IN MILLIMETERS. DIMENSIONS IN [] ARE IN INCHES FOR CUSTOMER REFERENCE ONLY UNLESS OTHERWISE SPECIFIED TOLERANCE ARE:</small>		TITLE SMA STRAIGHT BULKHEAD FEMALE SOLDER FOR .086 CABLE
<small>THESE DRAWINGS AND SPECIFICATIONS ARE THE PROPERTY OF ANOISON ELECTRONICS LTD AND SHOULD NOT BE USED WITHOUT WRITTEN PERMISSION COPYRIGHT © 2018 ANOISON ELECTRONICS LTD</small>		VIEW
<small>.XX ±0.13 [.005"] .X ±0.20 [.008"] X ±0.50 [.019"] .X° ±1° X° ±2°</small>		PART NO. ANO 2112-1022 SIZE A3 SCALE 5:1 SHEET 1/1 REV. D