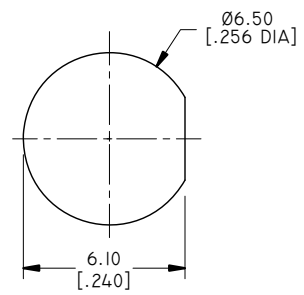
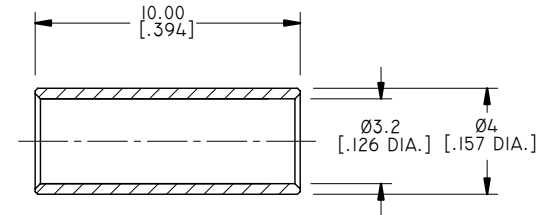
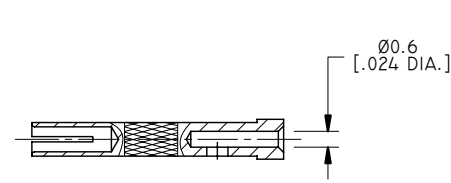
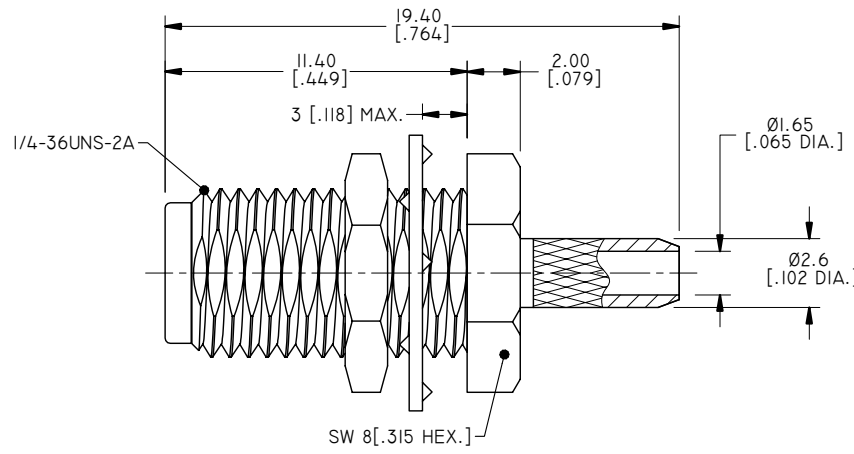


- 1.0 MATERIAL & FINISH
 1.1 BODY: BRASS, SEE TABLE
 1.2 CENTER CONTACT: BERYLLIUM COPPER ALLOY, GOLD PLATED
 1.3 WASHER: PHOSPHOR BRONZE, SEE TABLE
 1.4 FASTENING NUT: BRASS, SEE TABLE
 1.5 CRIMP FERRULE: COPPER, NICKEL PLATED
 1.6 INSULATOR: PTFE

- 2.0 ENVIRONMENTAL DATA:
 2.1 TEMPERATURE RANGE: -55°C~+125°C
 2.2 2011/65/EU (RoHS): COMPLIANT

- 3.0 ELECTRICAL SPECIFICATIONS:
 3.1 IMPEDANCE: 50 Ω
 3.2 FREQUENCY RANGE: DC~6GHZ
 3.3 VSWR: 1.30 MAX.

REVISIONS			
REV.	DESCRIPTION	DATE	APPROVED
F	FINISH CHANGED	07/11/12	J. QU
G	FINISH ADDED	06/18/16	J. QU



RECOMMENDED MOUNTING HOLE

PART NUMBER	PART	FINISH
ANO 2112-1014	BODY/WASHER/FATENING NUT	GOLD
ANO 2112-1014-1	BODY/WASHER/FATENING NUT	ALBALOY

DRAWN	L. YANG	DATE	06/18/16
CHECKED	X. B. YANG	DATE	06/18/16
APPROVED	J. QU	DATE	06/18/16
UNLESS OTHERWISE SPECIFIED DIMENSIONS ARE IN MILLIMETERS, DIMENSIONS IN [] ARE IN INCHES FOR CUSTOMER REFERENCE ONLY UNLESS OTHERWISE SPECIFIED TOLERANCE ARE:		THESE DRAWINGS AND SPECIFICATIONS ARE THE PROPERTY OF ANOISON ELECTRONICS LTD AND SHOULD NOT BE USED WITHOUT WRITTEN PERMISSION COPYRIGHT © 2016 ANOISON ELECTRONICS LTD	
.XX	±0.13 [.005"]		
.X	±0.20 [.008"]		
X	±0.50 [.019"]		
.X°	±1°		
X°	±2°		



TITLE			
SMA STRAIGHT BULKHEAD FEMALE CRIMP FOR RG174/316/LMRI00 CABLE			
VIEW		PART NO.	
		ANO 2112-1014	
SIZE	SCALE	SHEET	REV.
A3	5:1	1/1	G