

4

3

2

1

1.0 MATERIAL

- 1.1 BODY: BERYLLIUM COPPER
 1.2 CENTER CONTACT: BERYLLIUM COPPER
 1.3 INSULATOR: PEI/PTFE
 1.4 COUPLING NUT: BRASS

2.0 FINISH:

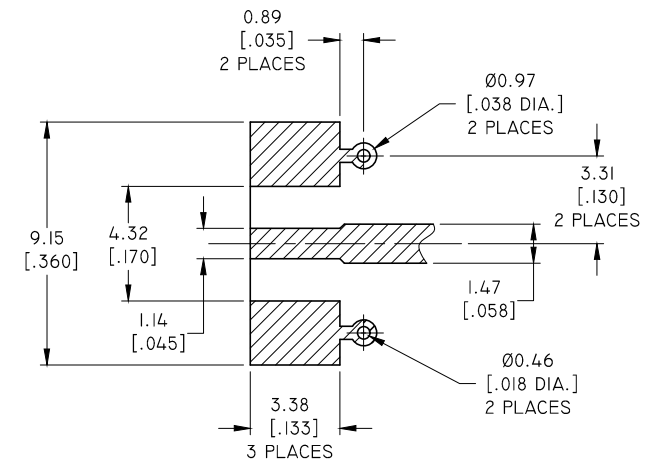
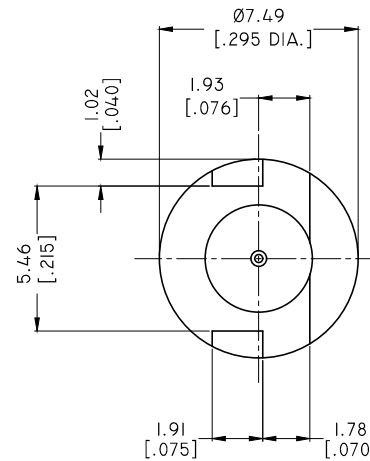
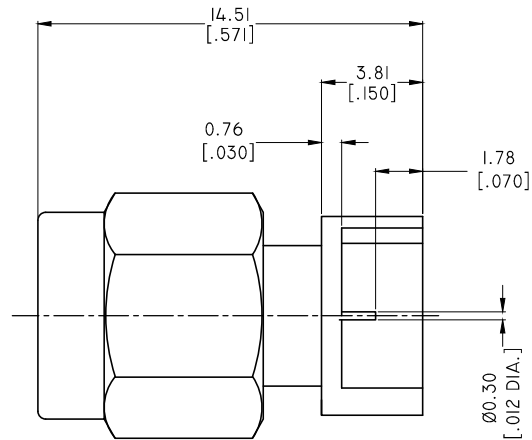
- 2.1 CENTER CONDUCTORS, BODY AND SOLDER COMPONENTS SHALL BE PLATED MIL-G-45204 TYPE II, CLASS I OVER NICKEL PLATE PER QQ-N-290

3.0 ELECTRICAL SPECIFICATIONS:

- 3.1 IMPEDANCE: 50 Ω
 3.2 FREQUENCY RANGE: DC~27GHZ
 3.3 VSWR: 1.20 MAX.
 3.4 INSERTION LOSS: 0.05 √F(GHZ)
 4.0 ENVIRONMENTAL DATA:
 4.1 TEMPERATURE RANGE: -55°C~+125°C
 4.2 CONTACT TORQUE: 4.0 INCH-OUNCES MIN.
 4.3 COUPLING NUT MATING TORQUE: 8-10 INCH-LBS
 4.4 DURABILITY: 500 CYCLES MIN.
 4.5 2011/65/EU(RoHS) AND 2015/863/(RoHS): COMPLIANT
 4.6 1907/2006/EC(REACH) AND 1999/45/EC(REACH): COMPLIANT

REVISIONS

REV.	DESCRIPTION	DATE	APPROVED
A	INITIAL RELEASE	07/09/19	J. QU



RECOMMENDED PCB LAYOUT
 BOARD THICKNESS 1.57 [.062]

DRAWN	L. YANG	DATE	07/09/19
CHECKED	W. YANG	DATE	07/09/19
APPROVED	J. QU	DATE	07/09/19
UNLESS OTHERWISE SPECIFIED DIMENSIONS ARE IN MILLIMETERS. DIMENSIONS IN [] ARE IN INCHES FOR CUSTOMER REFERENCE ONLY UNLESS OTHERWISE SPECIFIED TOLERANCE ARE:		THESE DRAWINGS AND SPECIFICATIONS ARE THE PROPERTY OF ANOISON ELECTRONICS LTD AND SHOULD NOT BE USED WITHOUT WRITTEN PERMISSION COPYRIGHT © 2019 ANOISON ELECTRONICS LTD	
.XX	±0.13 [.005"]		
.X	±0.20 [.008"]		
X	±0.50 [.019"]		
.X°	±1°		
X°	±2°		



TITLE				
SMA MALE PCB MOUNT FOR .062" BOARD				
VIEW		PART NO.		
		ANO 2111-4533		
SIZE	SCALE	SHEET	REV.	
A3	5:1	1/1	A	