

MATERIAL & FINISH:

1. BODY: STAINLESS STEEL, PASSIVATED
2. CENTER CONTACT: BERYLLIUM COPPER ALLOY, GOLD PLATED
3. COUPLING NUT: STAINLESS STEEL, PASSIVATED
4. RETAINING RING: BERYLLIUM COPPER ALLOY, NICKEL PLATED
5. INSULATOR: PEI & PTFE

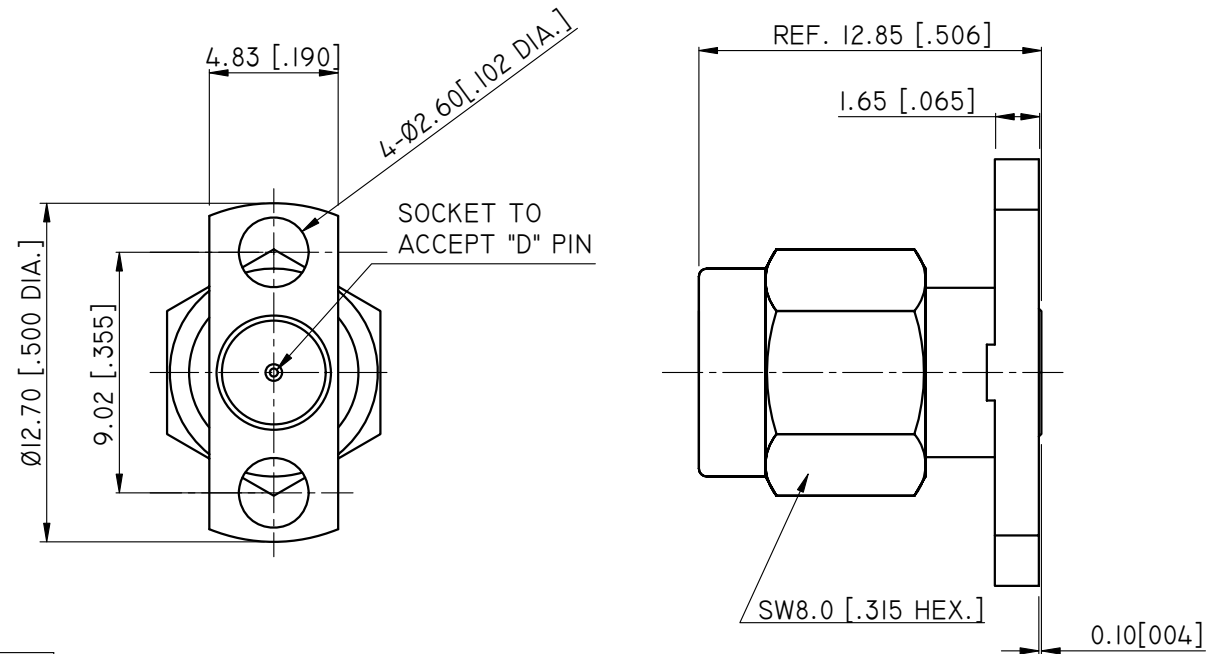
ENVIRONMENTAL DATA:

1. TEMPERATURE RANGE: -55°C~+165°C
2. 2011/65/EU (RoHS): COMPLIANT

ELECTRICAL SPECIFICATIONS:

1. IMPEDANCE: 50 Ω
2. FREQUENCY RANGE: DC~27GHZ
3. VSWR: 1.10 MAX. DC~18GHZ
1.15 MAX. 18~27GHZ
4. DIELECTRIC WITHSTANDING VOLTAGE: 1000V

REVISIONS			
REV.	DESCRIPTION	DATE	APPROVED
A	INITIAL RELEASE	05/21/15	J. QU



PART NO.	D	MAX. PIN DEPTH
ANO 2111-3345-1	Ø0.23 [.009 DIA.]	1.65 [.065]
ANO 2111-3345-2	Ø0.30 [.012 DIA.]	1.90 [.075]
ANO 2111-3345-3	Ø0.38 [.015 DIA.]	2.54 [.100]
ANO 2111-3345-4	Ø0.46 [.018 DIA.]	2.54 [.100]
ANO 2111-3345-5	Ø0.51 [.020 DIA.]	2.54 [.100]

DRAWN L. YANG DATE 05/21/15					
CHECKED X. B. YANG DATE 05/21/15					
APPROVED J. QU DATE 05/21/15	TITLE SMA STRAIGHT MALE, 2 HOLES FLANGE FIELD REPLACEABLE				
UNLESS OTHERWISE SPECIFIED DIMENSIONS ARE IN MILLIMETERS, DIMENSIONS IN [] ARE IN INCHES FOR CUSTOMER REFERENCE ONLY UNLESS OTHERWISE SPECIFIED TOLERANCE ARE: .XX ±0.13 [.005"] .X ±0.20 [.008"] X ±0.50 [.019"] .X° ±1° X° ±2°	THESE DRAWINGS AND SPECIFICATIONS ARE THE PROPERTY OF ANOISON ELECTRONICS LTD AND SHOULD NOT BE USED WITHOUT WRITTEN PERMISSION COPYRIGHT © 2015 ANOISON ELECTRONICS LTD				
	VIEW 	PART NO. ANO 2111-3345	SIZE A3	SCALE 5:1	SHEET 1/1