

**MATERIAL & FINISH:**

1. BODY: STAINLESS STEEL, PASSIVATED
2. CENTER CONTACT: BERYLLIUM COPPER ALLOY, GOLD PLATED
3. COUPLING NUT: STAINLESS STEEL, PASSIVATED
4. RETAINING RING: BERYLLIUM COPPER ALLOY, NICKEL PLATED
5. INSULATOR: PEI/PTFE

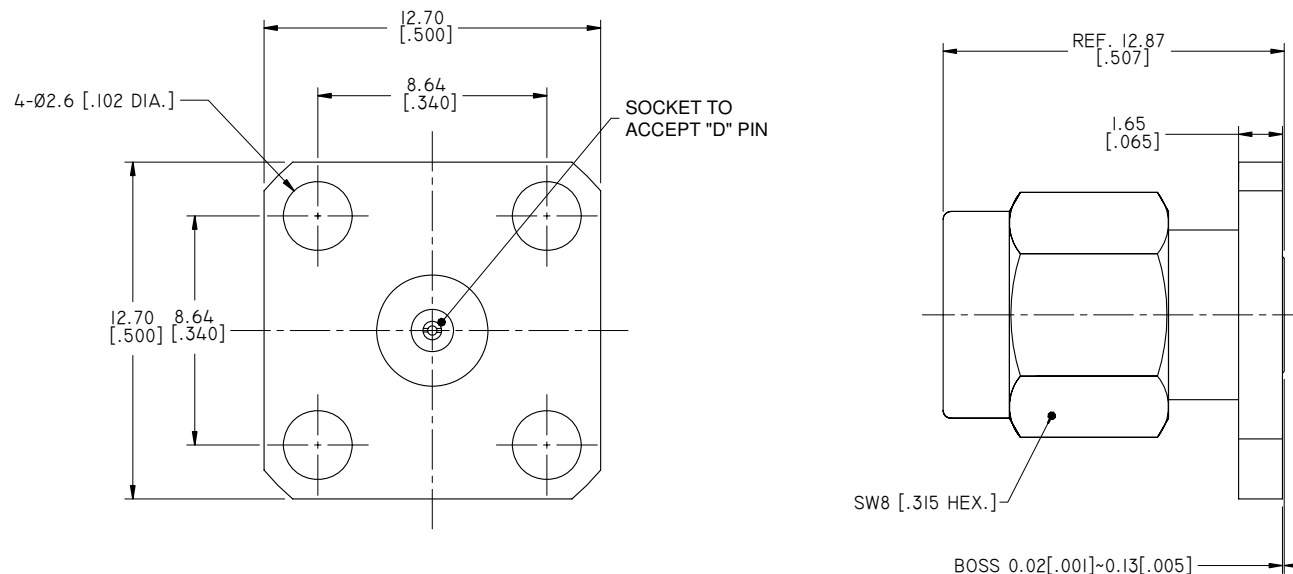
**ENVIRONMENTAL DATA:**

1. TEMPERATURE RANGE: -55°C~+165°C
2. 2011/65/EU (RoHS): COMPLIANT

**ELECTRICAL SPECIFICATIONS:**

1. IMPEDANCE: 50 Ω
2. FREQUENCY RANGE: DC~27GHZ
3. VSWR: 1.10 MAX. DC~18GHZ  
1.15 MAX. 18~27GHZ
4. DIELECTRIC WITHSTANDING VOLTAGE: 1000V

REVISIONS			
REV.	DESCRIPTION	DATE	APPROVED
A	INITIAL RELEASE	04/10/15	J. QU
B	ADDED ANO 2111-3338-6	05/21/15	J. QU



PART NO.	D	MAX. PIN DEPTH
ANO 2111-3338-1	Ø0.23 [0.009 DIA.]	1.65 [0.065]
ANO 2111-3338-2	Ø0.30 [0.012 DIA.]	1.90 [0.075]
ANO 2111-3338-3	Ø0.38 [0.015 DIA.]	2.54 [0.100]
ANO 2111-3338-4	Ø0.46 [0.018 DIA.]	2.54 [0.100]
ANO 2111-3338-5	Ø0.51 [0.020 DIA.]	2.54 [0.100]
ANO 2111-3338-6	Ø0.91 [0.036 DIA.]	2.54 [0.100]

DRAWN L. YANG	DATE 05/21/15	
CHECKED X. B. YANG	DATE 05/21/15	
APPROVED J. QU	DATE 05/21/15	TITLE SMA STRAIGHT MALE, 4 HOLES FLANGE FIELD REPLACEABLE
UNLESS OTHERWISE SPECIFIED DIMENSIONS ARE IN MILLINMETERS. DIMENSIONS IN [ ] ARE IN INCHES FOR CUSTOMER REFERENCE ONLY UNLESS OTHERWISE SPECIFIED TOLERANCE ARE: .XX ±0.13 [0.005"] .X ±0.20 [0.008"] X ±0.50 [0.019"] .X° ±1° X° ±2°	THESE DRAWINGS AND SPECIFICATIONS ARE THE PROPERTY OF ANOISON ELECTRONICS LTD AND SHOULD NOT BE USED WITHOUT WRITTEN PERMISSION COPYRIGHT © 2015 ANOISON ELECTRONICS LTD	VIEW 
PART NO. ANO 2111-3338		SIZE A3
SCALE 5:1	SHEET 1/1	REV. B