

4

3

2

1

MATERIAL & FINISH

- 1 BODY: BRASS, GOLD PLATED
- 2 INTERNAL CONTACT: BERYLLIUM COPPER ALLOY, GOLD PLATED
- 3 CENTER CONTACT: BRASS, GOLD PLATED
- 4 INSULATOR: PTFE
- 5 CRIMP FERRULE: COPPER, NICKEL PLATED

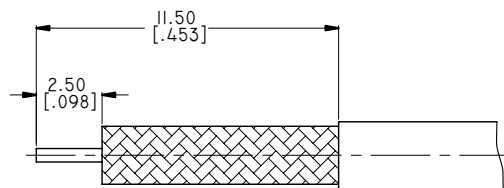
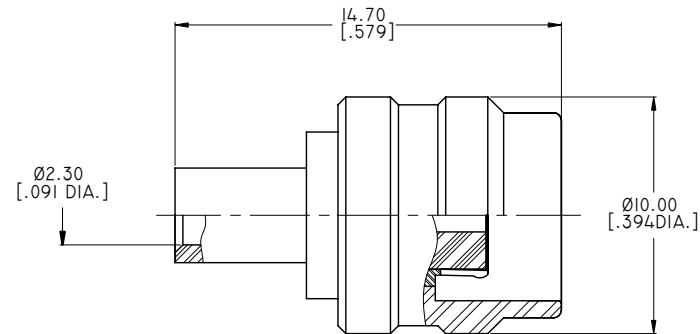
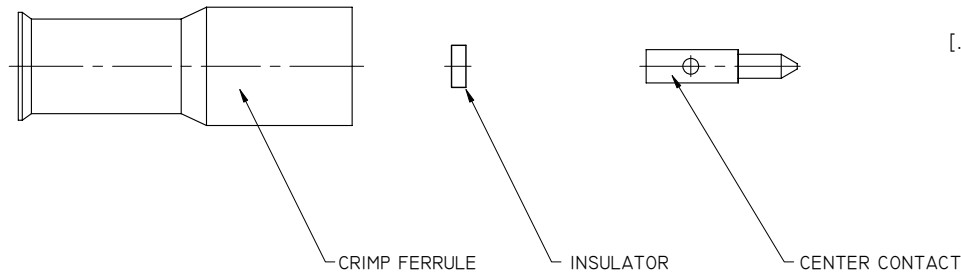
ELECTRICAL DATA:

- 1 IMPEDANCE: 50 OHMS
- 2 FREQUENCY RANGE: DC~18 GHZ
- 3 VSWR: 1.15 TYP. AT DC~6 GHZ  
1.35 TYP. AT 6 GHZ~18 GHZ

ENVIRONMENTAL DATA:

- 1 TEMPERATURE RANGE: -65°C~+165°C
- 2 2011/65/EU (RoHS): COMPLIANT

REVISIONS			
REV.	DESCRIPTION	DATE	APPROVED
A	INITIAL RELEASE	09/14/17	J. QU
B	14.20 WAS 15.60	09/19/17	J. QU
C	PUSH ON SMA WAS QUICK LOCK SMA	09/26/17	J. QU

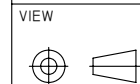


CABLE STRIPPING DIMENSIONS

DRAWN	P. CHEN	DATE	09/26/17
CHECKED	L. YANG	DATE	09/26/17
APPROVED	J. QU	DATE	09/26/17
UNLESS OTHERWISE SPECIFIED DIMENSIONS ARE IN MILLIMETERS, DIMENSIONS IN [ ] ARE IN INCHES FOR CUSTOMER REFERENCE ONLY UNLESS OTHERWISE SPECIFIED TOLERANCE ARE:		THESE DRAWINGS AND SPECIFICATIONS ARE THE PROPERTY OF ANOISON ELECTRONICS LTD AND SHOULD NOT BE USED WITHOUT WRITTEN PERMISSION COPYRIGHT © 2017 ANOISON ELECTRONICS LTD	
.XX	±0.13 [.005"]		
.X	±0.20 [.008"]		
X	±0.50 [.019"]		
.X°	±1°		
X°	±2°		



TITLE  
SMA PUSH ON STRAIGHT MALE SOLDER FOR AFLEX086 CABLE



PART NO. ANO 2111-2475		SIZE A3	SCALE 5:1	SHEET 1/1	REV. C
---------------------------	--	------------	--------------	--------------	-----------