

**MATERIAL & FINISH:**

- 1 BODY: SEE TABLE
- 2 COUPLING NUT: SEE TABLE
- 3 CENTER CONTACT: BRASS, GOLD PLATED
- 4 CRIMP FERRULE: COPPER, NICKEL PLATED
- 5 RETINING RING: BERYLLIUM COPPER, NICKEL PLATED
- 6 INSULATOR: PTFE
- 7 GASKET: MVQ (SILICONE RUBBER)

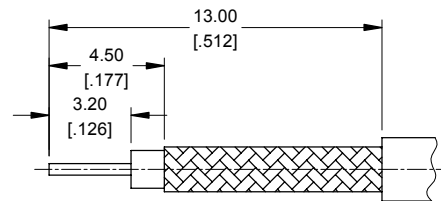
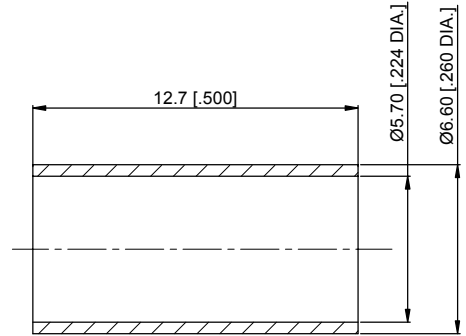
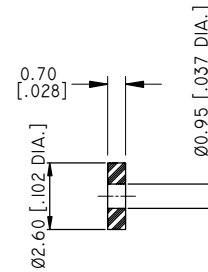
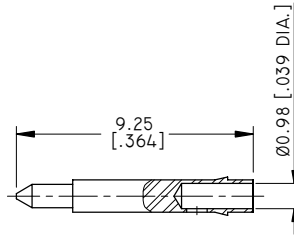
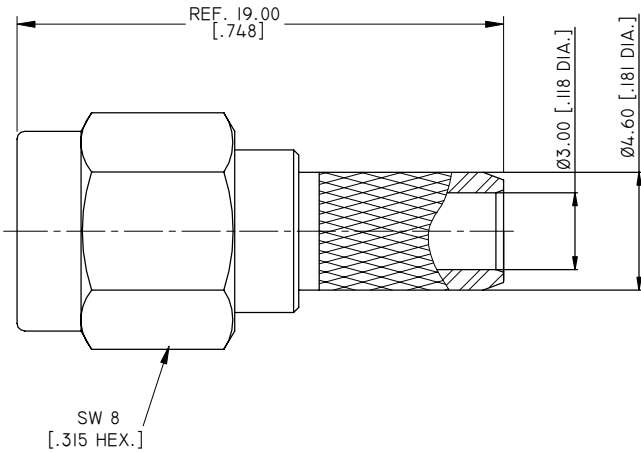
**ENVIRONMENTAL DATA:**

- 1 TEMPERATURE RANGE: -55°C--+125°C
- 2 2011/65/EU (RoHS): COMPLIANT

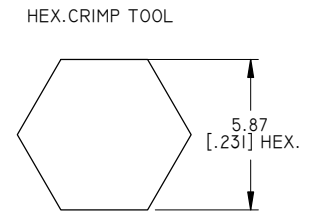
**ELECTRICAL DATA:**

- 1 IMPEDANCE: 50 Ω
- 2 FREQUENCY RANGE: DC~6 GHz
- 3 VSWR: 1.15 AT DC~6 GHz
- 4 WITHSTANDING VOLTAGE: 1000V

REVISIONS			
REV.	DESCRIPTION	DATE	APPROVED
G	MATERIAL & FINISH ADDED	10/07/10	J. Q
H	ADDED TABLE	02/05/16	J. Q
I	PART NO. ANO 2111-2237-3 ADDED	08/31/23	J. Q



CABLE STRIPPING DIMENSIONS



CRIMP WIDTH: 10 [.394]

PART	MATERIAL	FINISH	PART NUMBER
BODY	BRASS	ALBALOY	ANO 2111-2237
COUPLING NUT	BRASS	ALBALOY	
BODY	STAINLESS STEEL	PASSIVATED	ANO 2111-2237-1
COUPLING NUT	STAINLESS STEEL	PASSIVATED	
BODY	BRASS	GOLD	ANO 2111-2237-2
COUPLING NUT	BRASS	GOLD	
BODY	BRASS	NICKEL	ANO 2111-2237-3
COUPLING NUT	BRASS	NICKEL	

DRAWN	W. Y	DATE	10/19/16
CHECKED	L. Y	DATE	10/19/16
APPROVED	J. Q	DATE	10/19/16
UNLESS OTHERWISE SPECIFIED DIMENSIONS ARE IN MILLIMETERS, DIMENSIONS IN [ ] ARE IN INCHES FOR CUSTOMER REFERENCE ONLY UNLESS OTHERWISE SPECIFIED TOLERANCE ARE:		THESE DRAWINGS AND SPECIFICATIONS ARE THE PROPERTY OF ANOISON ELECTRONICS LTD AND SHOULD NOT BE USED WITHOUT WRITTEN PERMISSION COPYRIGHT © 2023 ANOISON ELECTRONICS LTD	
.XX	±0.13 [.005"]		
.X	±0.20 [.008"]		
X	±0.50 [.019"]		
.X°	±1°		
X°	±2°		



TITLE  
SMA STRAIGHT MALE CRIMP FOR RGI42 CABLE

VIEW	PART NO. ANO 2111-2237		
SIZE A3	SCALE 5:1	SHEET 1/1	REV. 1