

1.0 MATERIAL & FINISH

1.1 OUTER CONTACT: SEE TABLE

1.2 CENTER CONTACT: BERYLLIUM COPPER ALLOY, GOLD PLATING

1.3 INSULATOR: PTFE

1.4 COUPLING NUT: SEE TABLE

2.0 ENVIRONMENTAL DATA:

2.1 TEMPERATURE RANGE: -55°C~+165°C

2.2 2011/65/EU (RoHS): COMPLIANT

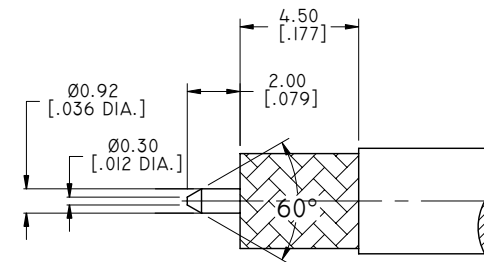
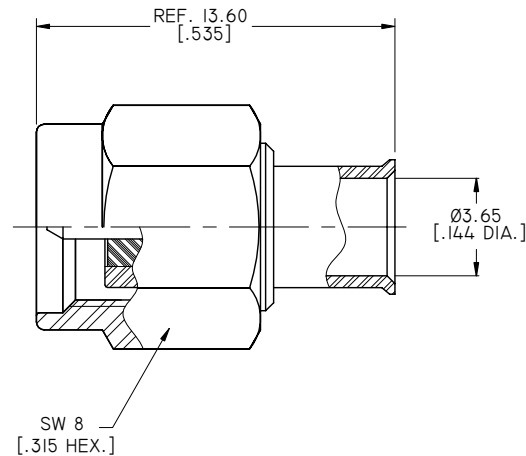
3.0 ELECTRICAL SPECIFICATIONS:

3.1 IMPEDANCE: 50 Ω

3.2 FREQUENCY RANGE: DC~26.5GHZ

3.3 VSWR: ≤1.20 AT DC~18GHZ

| REVISIONS | | | |
|-----------|------------------------|----------|----------|
| REV. | DESCRIPTION | DATE | APPROVED |
| E | ADDED PART NUMBER | 09/29/16 | J. QU |
| F | DRAWING FORMAT CHANGED | 07/24/17 | J. QU |



CABLE STRIPPING DIMENSIONS

| PART NUMBER | MATERIAL & FINISH | |
|-----------------|-----------------------|-----------------------------|
| | OUTER CONTACT | COUPLING NUT |
| ANO 2111-2181 | BRASS, GOLD | BRASS, GOLD |
| ANO 2111-2181-1 | BRASS, GOLD | STAINLESS STEEL, PASSIVATED |
| ANO 2111-2181-2 | STAINLESS STEEL, GOLD | STAINLESS STEEL, PASSIVATED |
| ANO 2111-2181-3 | BRASS, ALBALOY | BRASS, ALBALOY |

| | | | |
|--|---------------|--|----------|
| DRAWN | P. CHEN | DATE | 07/24/17 |
| CHECKED | L. YANG | DATE | 07/24/17 |
| APPROVED | J. QU | DATE | 07/24/17 |
| UNLESS OTHERWISE SPECIFIED DIMENSIONS ARE IN MILLINMETERS. DIMENSIONS IN [] ARE IN INCHES FOR CUSTOMER REFERENCE ONLY UNLESS OTHERWISE SPECIFIED TOLERANCE ARE: | | THESE DRAWINGS AND SPECIFICATIONS ARE THE PROPERTY OF ANOISON ELECTRONICS LTD AND SHOULD NOT BE USED WITHOUT WRITTEN PERMISSION COPYRIGHT © 2017 ANOISON ELECTRONICS LTD | |
| .XX | ±0.13 [.005"] | | |
| .X | ±0.20 [.008"] | | |
| X | ±0.50 [.019"] | | |
| .X° | ±1° | | |
| X° | ±2° | | |



TITLE
SMA STRAIGHT MALE SOLDER FOR .141 CABLE CAPTIVATED CONTACT

| | | | | |
|------|---------------------------|--------------|--------------|-----------|
| VIEW | PART NO. ANO 2111-2181 | | | |
| | SIZE A3 | SCALE 5:1 | SHEET 1/1 | REV. F |