

1.0 MATERIAL & FINISH

- 1.1 BODY: BRASS, GOLD PLATED
- 1.2 CENTER CONTACT: BRASS, GOLD PLATED
- 1.3 INSULATOR: PTFE
- 1.4 COUPLING NUT:SEE SCHEDULE
- 1.5 RETAINING RING:BERYLLIUM COPPER ALLOY, NICKEL PLATED
- 1.6 GASKET:MVQ(SILICONE RUBBER)

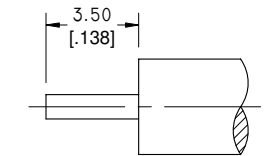
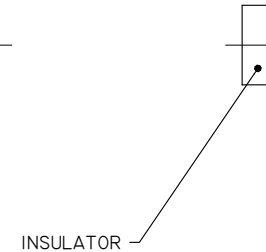
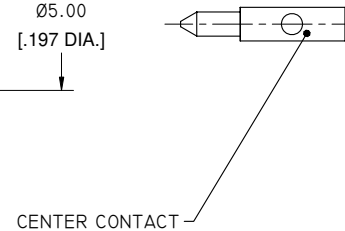
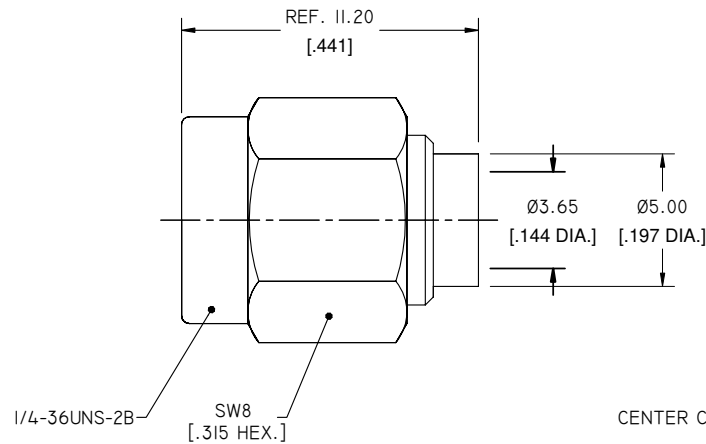
2.0 ENVIRONMENTAL DATA:

- 2.1 TEMPERATURE RANGE: -55°C~+125°C
- 2.2 2011/65/EU (RoHS): COMPLIANT

3.0 ELECTRICAL SPECIFICATIONS:

- 3.1 IMPEDANCE: 50 Ω
- 3.2 FREQUENCY RANGE: DC~18 GHZ
- 3.3 VSWR: ≤1.30
- 3.4 CENTER CONTACT: SOLDERED
- 3.5 OUTER CONTACT: SOLDERED

REVISIONS			
REV.	DESCRIPTION	DATE	APPROVED
G	PART NUMBER CHANGED	11/15/12	J. QU
H	P/N CHANGED	10/19/15	J. QU
I	DC~18GHZ WAS DC~12.4GHZ	03/23/16	J. QU



CABLE STRIPPING DIMENSIONS

PART NUMBER	PART	MATERIAL	FINISH
ANO 2111-2058	COUPLING NUT	BRASS	GOLD
ANO 2111-2058-I		STAINLESS STEEL	PASSIVATED

DRAWN	P. CHEN	DATE	03/23/16
CHECKED	L. YANG	DATE	03/23/16
APPROVED	J. QU	DATE	03/23/16
UNLESS OTHERWISE SPECIFIED DIMENSIONS ARE IN MILLINMETERS. DIMENSIONS IN [] ARE IN INCHES FOR CUSTOMER REFERENCE ONLY UNLESS OTHERWISE SPECIFIED TOLERANCE ARE:		THESE DRAWINGS AND SPECIFICATIONS ARE THE PROPERTY OF ANOISON ELECTRONICS LTD AND SHOULD NOT BE USED WITHOUT WRITTEN PERMISSION COPYRIGHT © 2016 ANOISON ELECTRONICS LTD	
.XX	±0.13 [.005"]		
.X	±0.20 [.008"]		
X	±0.50 [.019"]		
.X°	±1°		
X°	±2°		



TITLE
SMA STRAIGHT MALE SOLDER FOR RG402/SMT680-I41/670-I41 CABLE

VIEW	PART NO. ANO 2111-2058			
	SIZE	SCALE	SHEET	REV.
	A3	5:1	1/1	I