

MATERIAL & FINISH

- 1 BODY: BRASS, NICKEL PLATED
- 2 CENTER CONTACT: BRASS, GOLD PLATED
- 3 INSULATOR: PTFE
- 4 COUPLING NUT: BRASS, NICKEL PLATED
- 5 GASKET: SILICONE RUBBER

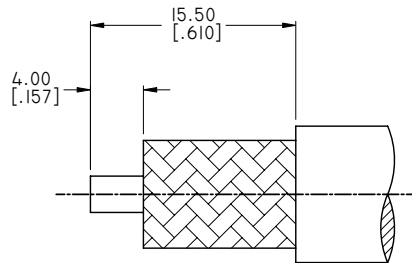
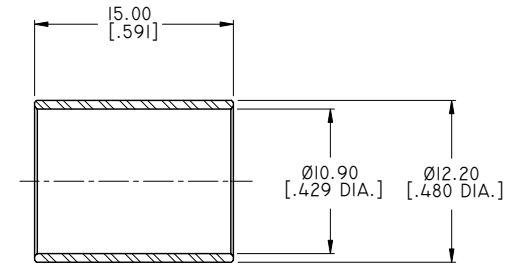
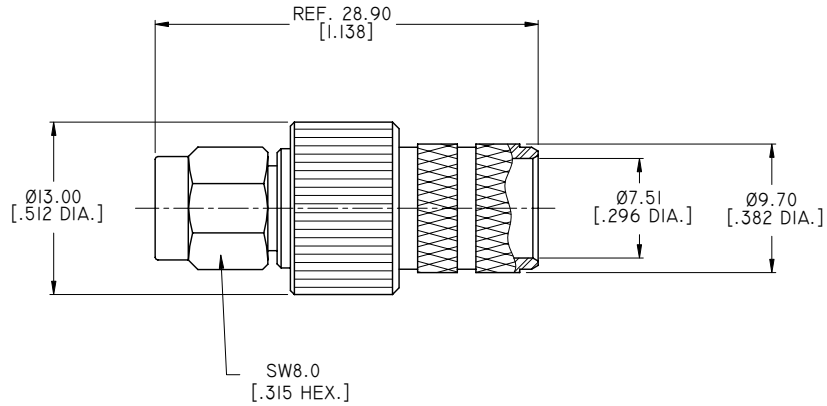
ELECTRICAL DATA:

- 1 IMPEDANCE: 50 OHMS
- 2 FREQUENCY RANGE: DC~6 GHZ

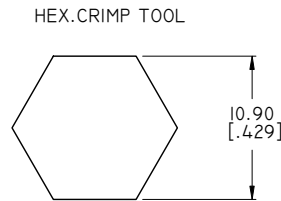
ENVIRONMENTAL DATA:

- 1 TEMPERATURE RANGE: -55°C~+125°C
- 2 2011/65/EU (RoHS): COMPLIANT

REVISIONS			
REV.	DESCRIPTION	DATE	APPROVED
D	STRUCTURE CHANGED	03/06/15	J. QU
E	OUTLINE DRAWING AND CABLE STRIPPING DIMENSIONS CHANGED	03/09/15	J. QU
F	LENGTH CHANGED	04/14/15	J. QU



CABLE STRIPPING DIMENSIONS



CRIMP WIDTH: 12.0 [.472]

DRAWN	X. B. YANG	DATE	04/14/15
CHECKED	L. YANG	DATE	04/14/15
APPROVED	J. QU	DATE	04/14/15
UNLESS OTHERWISE SPECIFIED DIMENSIONS ARE IN MILLINMETERS. DIMENSIONS IN [] ARE IN INCHES FOR CUSTOMER REFERENCE ONLY UNLESS OTHERWISE SPECIFIED TOLERANCE ARE:		THESE DRAWINGS AND SPECIFICATIONS ARE THE PROPERTY OF ANOISON ELECTRONICS LTD AND SHOULD NOT BE USED WITHOUT WRITTEN PERMISSION COPYRIGHT © 2015 ANOISON ELECTRONICS LTD	
.XX	±0.13 [.005"]		
.X	±0.20 [.008"]		
X	±0.50 [.019"]		
.X°	±1°		
X°	±2°		



TITLE			
SMA STRAIGHT MALE CRIMP FOR LMR400 CABLE			
VIEW		PART NO.	
		ANO 2111-2003	
SIZE	SCALE	SHEET	REV.
A3	2.5:1	1/1	F