

MATERIAL & FINISH:

- 1 BODY: SEE TABLE
- 2 CENTER CONTACT: BERYLLIUM COPPER ALLOY, GOLD PLATED
- 3 COUPLING NUT: SEE TABLE
- 4 RETAINING RING: BERYLLIUM COPPER ALLOY, NO PLATEING
- 5 INSULATOR: PTFE
- 6 GASKET: SILICONE RUBBER

MECHANICAL DATA:

- 1 TORQUE WRENCH: 8 IN. LBS

ELECTRICAL DATA:

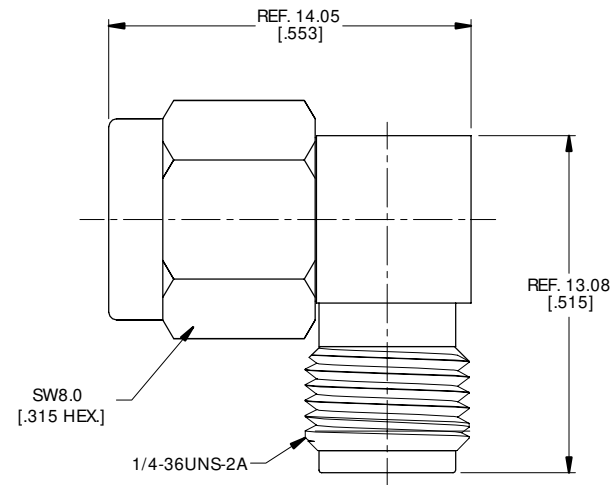
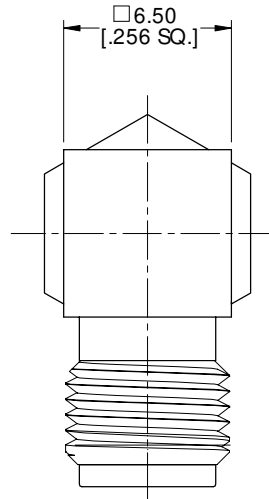
- 1 IMPEDANCE: 50 Ω
- 2 FREQUENCY RANGE: DC~26.5 GHz
- 3 VSWR: 1.10 MAX. AT DC~6 GHz
1.15 MAX. AT 6~12.4 GHz
1.20 MAX. AT 12.4~18 GHz
1.30 MAX. AT 18~26.5 GHz

ENVIRONMENTAL DATA:

- 1 TEMPERATURE RANGE: -55°C~+125°C
- 2 2011/65/EU(RoHS) AND 2015/863/(RoHS): COMPLIANT
- 3 1907/2006/EC(REACH): COMPLIANT

REVISIONS

REV.	DESCRIPTION	DATE	APPROVED
A	INITIAL RELEASE	05/08/18	J QU
B	ANO 211-212-2431-1 ADDED	11/11/21	J QU



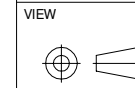
TABLE

PART NO.	PART	MATERIAL	FINISH
ANO 211-212-2431	BODY/COUPLING NUT	STAINLESS STEEL	PASSIVATED
ANO 211-212-2431-1		BRASS	NICKEL

DRAWN	X. B. YANG	DATE	11/11/21
CHECKED	W. YANG	DATE	11/11/21
APPROVED	J QU	DATE	11/11/21
UNLESS OTHERWISE SPECIFIED DIMENSIONS ARE IN MILLIMETERS, DIMENSIONS IN [] ARE IN INCHES FOR CUSTOMER REFERENCE ONLY UNLESS OTHERWISE SPECIFIED TOLERANCE ARE:		THESE DRAWINGS AND SPECIFICATIONS ARE THE PROPERTY OF ANOISON ELECTRONICS LTD AND SHOULD NOT BE USED WITHOUT WRITTEN PERMISSION COPYRIGHT © 2021 ANOISON ELECTRONICS LTD	
.XX	±0.13 [0.005"]		
.X	±0.20 [0.008"]		
X	±0.50 [0.019"]		
.X°	±1°		
X°	±2°		



TITLE
ADAPTER, RIGHT ANGLE, SMA MALE TO SMA FEMALE



PART NO. ANO 211-212-2431			
SIZE A3	SCALE 5:1	SHEET 1/1	REV. B