

4

3

2

1

MATERIAL & FINISH:

- 1 BODY: BRASS, GOLD PLATED
- 2 CENTER CONTACT: BRASS, GOLD PLATED
- 3 LOCK WASHER: PHOSPHOR BRONZE, GOLD PLATED
- 4 FASTENING NUT: BRASS, GOLD PLATED
- 5 INSULATOR: PTFE

ENVIRONMENTAL DATA:

- 1. TEMPERATURE RANGE: -55°C~+125°C
- 2. 2011/65/EU (RoHS): COMPLIANT

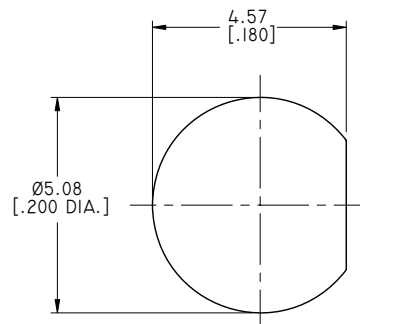
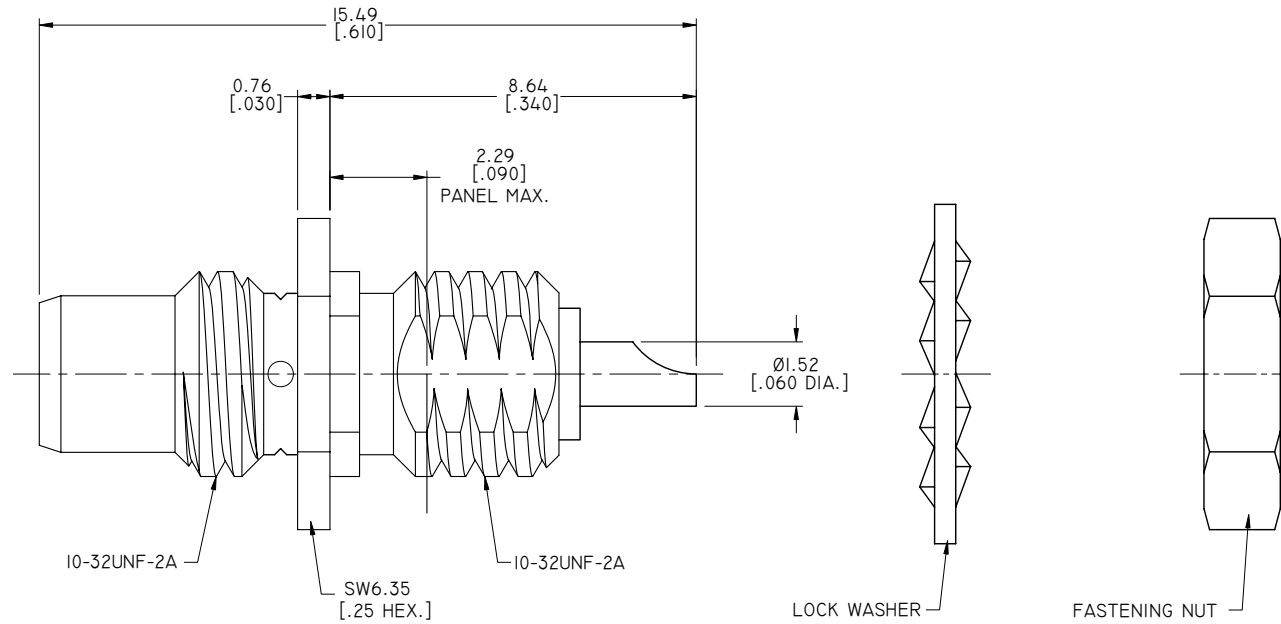
ELECTRICAL DATA:

- 1 IMPEDANCE: 50 Ω
- 2 FREQUENCY RANGE: DC~10 GHZ
- 3 VSWR: 1.30 MAX. AT DC~6 GHZ
1.50 MAX. AT 6~10 GHZ

MECHANICAL DATA:

- 1 INTERFACE STANDARDS: MIL-STD-348A

REVISIONS			
REV.	DESCRIPTION	DATE	APPROVED
A	INITIAL RELEASE	07/17/18	J. QU



RECOMMENDED MOUNTING HOLE

DRAWN	X. B. YANG	DATE	07/17/18
CHECKED	W. YANG	DATE	07/17/18
APPROVED	J. QU	DATE	07/17/18
UNLESS OTHERWISE SPECIFIED DIMENSIONS ARE IN MILLINMETERS. DIMENSIONS IN [] ARE IN INCHES FOR CUSTOMER REFERENCE ONLY UNLESS OTHERWISE SPECIFIED TOLERANCE ARE:		THESE DRAWINGS AND SPECIFICATIONS ARE THE PROPERTY OF ANOISON ELECTRONICS LTD AND SHOULD NOT BE USED WITHOUT WRITTEN PERMISSION COPYRIGHT © 2018 ANOISON ELECTRONICS LTD	
.xxx	±0.15 [.006"]		
.xx	±0.25 [.01"]		
.x	±0.50 [.019"]		
.x°	±1°		
x°	±2°		



TITLE
SMC STRAIGHT JACK BULKHEAD MOUNT CONNECTOR
SOLDER ATTACHMENT

VIEW	PART NO. ANO 1912-5005			
	SIZE	SCALE	SHEET	REV.
	A3	8:1	I/1	A

4

3

2

1