

4 3 2 1

MATERIAL & FINISH:

- 1 BODY: BRASS, GOLD PLATED
- 2 CENTER CONTACT: BERYLLIUM COPPER ALLOY, GOLD PLATED
- 3 OUTER CONTACT: BERYLLIUM COPPER ALLOY, GOLD PLATED
- 4 INSULATOR: PTFE
- 5 SPRING: STAINLESS STEEL, PASSIVATED
- 6 RING: BERYLLIUM COPPER ALLOY, NICKEL PLATED

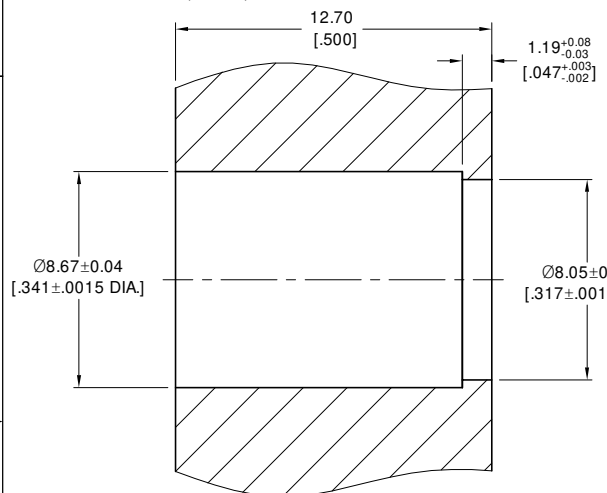
ENVIRONMENTAL DATA:

- 1 TEMPERATURE RANGE: -55 °C~+125 °C
- 2 2011/65/EU(RoHS) AND 2015/863/(RoHS): COMPLIANT
- 3 1999/2006/EC(REACH): COMPLIANT

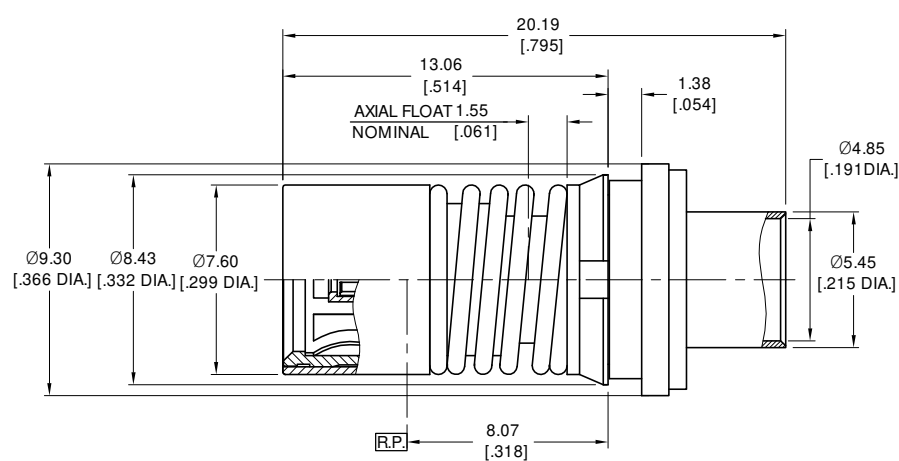
ELECTRICAL DATA:

- 1 IMPEDANCE: 50 Ω
- 2 FREQUENCY RANGE: DC~18 GHz
- 3 VSWR: ≤1.35
- 4 INSERTION LOSS: 0.40 dB MAX.
- 5 WORKING VOLTAGE: 480 VRMS
- 6 TEST VOLTAGE: 750 VRMS
- 7 INSULATION RESISTANCE: 5,000 M Ω

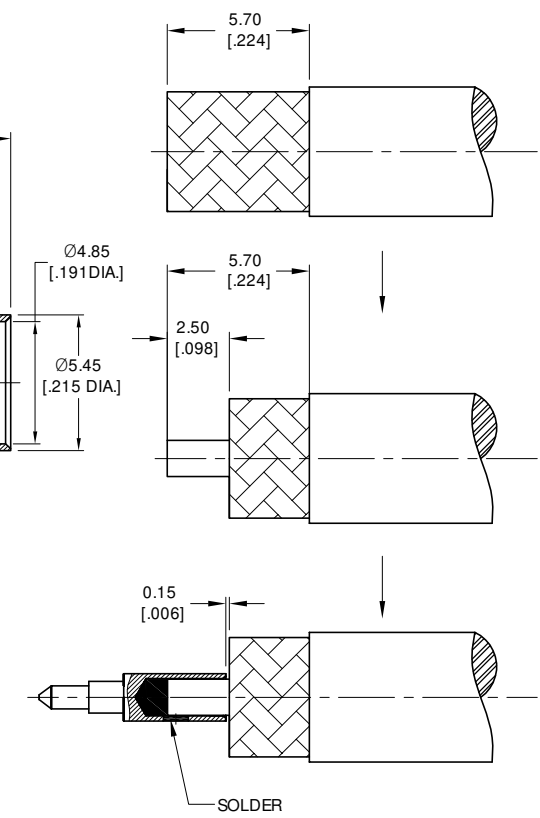
REVISIONS			
REV.	DESCRIPTION	DATE	APPROVED
G	CHANGED DIMENSIONS 13.06 WAS 13.55	08/26/25	J Q
H	CHANGED DIMENSIONS ±0.3 WAS ±0.27 ADDED DIMENSIONS 8.07MM	09/03/25	J Q
I	CHANGED AXIAL FLOAT 1.55 WAS 1.27	09/05/25	J Q



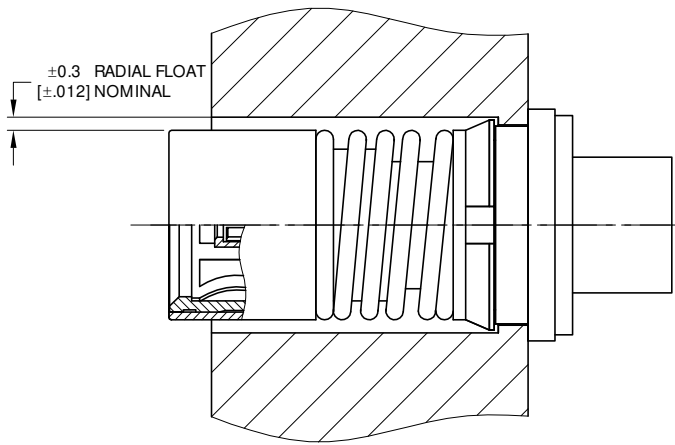
RECOMMENDED MOUNTING HOLE



NOTE:
EXTRACTION TOOL IS P/N T14002



CABLE STRIPPING DIMENSIONS



DRAWN	P. C	DATE	09/05/25
CHECKED	W. Y	DATE	09/05/25
APPROVED	J Q	DATE	09/05/25
UNLESS OTHERWISE SPECIFIED DIMENSIONS ARE IN MILLIMETERS, DIMENSIONS IN [] ARE IN INCHES FOR CUSTOMER REFERENCE ONLY UNLESS OTHERWISE SPECIFIED TOLERANCE ARE:		THESE DRAWINGS AND SPECIFICATIONS ARE THE PROPERTY OF ANOISON ELECTRONICS LTD AND SHOULD NOT BE USED WITHOUT WRITTEN PERMISSION COPYRIGHT © 2025 ANOISON ELECTRONICS LTD	
XX	±0.13 [0.005"]		
X	±0.20 [0.008"]		
X	±0.50 [0.019"]		
X"	±1°		
X"	±2°		



TITLE			
BMA STRAIGHT JACK (FEMALE SOCKET) SOLDER FOR PLEX210/IW1801			
VIEW		PART NO.	
		ANO 1412-2044	
SIZE	SCALE	SHEET	REV.
A3	5:1	1/1	I

4 3 2 1