

4 3 2 1

MATERIAL & FINISH:

- 1 BODY: BRASS, GOLD PLATED
- 2 CENTER CONTACT: BRASS, GOLD PLATED
- 3 INSULATOR: PTFE
- 4 O-RING: SILICONE RUBBER

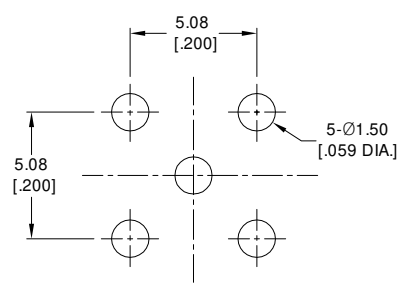
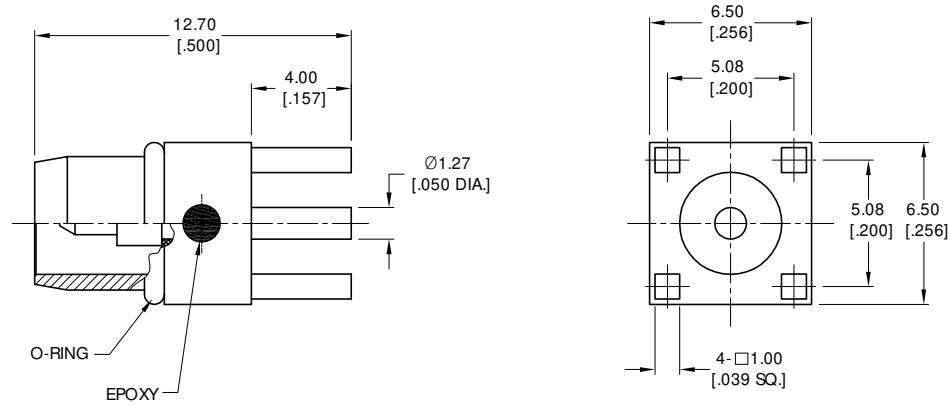
ELECTRICAL DATA:

- 1 IMPEDANCE: 50 Ω
- 2 FREQUENCY RANGE: DC~18 GHz
- 3 VSWR: 1.04+0.02x F (GHz) max.
- 4 INSERTION LOSS : 0.08x F (GHz) dB max.

ENVIRONMENTAL DATA:


- 1 TEMPERATURE RANGE: -65 °C~+165 °C
- 2 2011/65/EU (RoHS) AND 2015/863/(RoHS): COMPLIANT
- 3 1999/45/EC (REACH): COMPLIANT

REVISIONS			
REV.	DESCRIPTION	DATE	APPROVED
A	INITIAL RELEASE	05/06/24	J Q

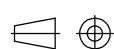


RECOMMENDED MOUNTING HOLE

DRAWN	P. C	DATE	05/06/24
CHECKED	X. Y	DATE	05/06/24
APPROVED	J Q	DATE	05/06/24
UNLESS OTHERWISE SPECIFIED DIMENSIONS ARE IN MILLIMETERS, DIMENSIONS IN [] ARE IN INCHES FOR CUSTOMER REFERENCE ONLY UNLESS OTHERWISE SPECIFIED TOLERANCE ARE:		THESE DRAWINGS AND SPECIFICATIONS ARE THE PROPERTY OF ANOISON ELECTRONICS LTD AND SHOULD NOT BE USED WITHOUT WRITTEN PERMISSION COPYRIGHT © 2024 ANOISON ELECTRONICS LTD	
	.XX	±0.13	[.005"]
	.X	±0.20	[.008"]
	X	±0.50	[.019"]
	.X°	±1°	
	X°	±2°	



TITLE
BMA STRAIGHT PLUG PCB RECEPTACLE

VIEW 

PART NO.
ANO 1411-4035

SIZE	SCALE	SHEET	REV.
A3	5:1	1/1	A

4 3 2 1