

4 3 2 1

**MATERIAL & FINISH:**

- BODY : STAINLESS STEEL, GOLD PLATED
- CENTER CONTACT: BERYLLIUM COPPER ALLOY, GOLD PLATED
- INSULATOR: PTFE

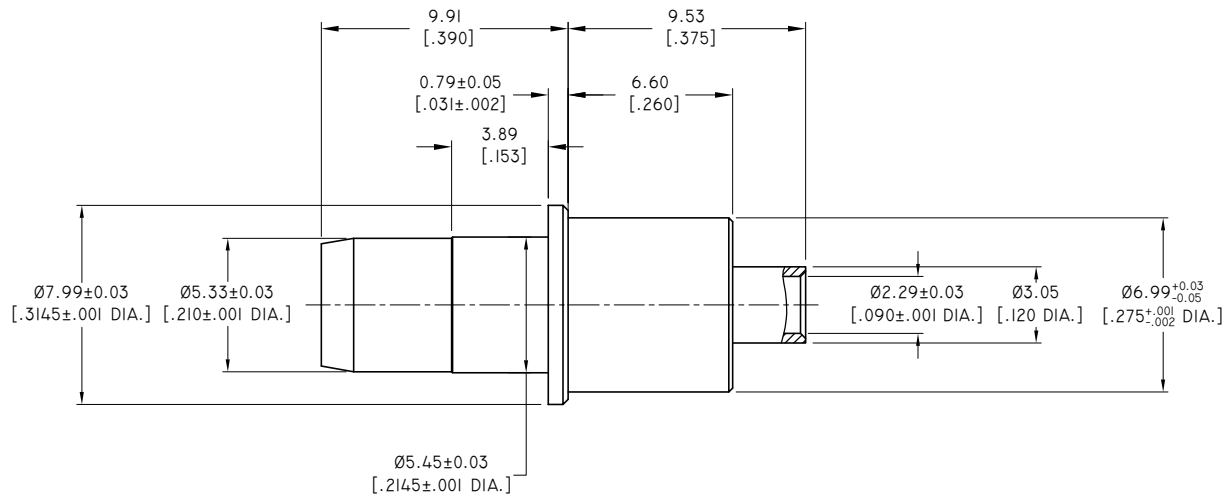
**ELECTRICAL DATA:**

- IMPEDANCE: 50 Ω
- FREQUENCY RANGE: DC-18 GHZ
- VSWR: ≤1.30

**ENVIRONMENTAL DATA:**

- TEMPERATURE RANGE: -40 °C~+85 °C
- 2011/65/EU(RoHS) AND 2015/863/(RoHS): COMPLIANT
- 1999/45/EC(REACH): COMPLIANT

REVISIONS			
REV.	DESCRIPTION	DATE	APPROVED
A	INITIAL RELEASE	03/26/19	J. QU
B	CHANGED TITLE, MATERIAL & FINISH	07/22/24	J. QU



DRAWN	P. CHEN	DATE	07/22/24
CHECKED	X. B. YANG	DATE	07/22/24
APPROVED	J. QU	DATE	07/22/24
UNLESS OTHERWISE SPECIFIED DIMENSIONS ARE IN MILLIMETERS, DIMENSIONS IN [ ] ARE IN INCHES FOR CUSTOMER REFERENCE ONLY UNLESS OTHERWISE SPECIFIED TOLERANCE ARE:		THESE DRAWINGS AND SPECIFICATIONS ARE THE PROPERTY OF ANOISON ELECTRONICS LTD AND SHOULD NOT BE USED WITHOUT WRITTEN PERMISSION COPYRIGHT © 2024 ANOISON	
.XX	±0.13 [.005"]		
.X	±0.20 [.008"]		
X	±0.50 [.019"]		
.X°	±1°		
X°	±2°		



TITLE			
BMA STRAIGHT PLUG SOLDER FOR .086 CABLE FITS TO D38999 SIZE 8 CAVITY			
VIEW		PART NO.	
		ANO 1411-2008	
SIZE	SCALE	SHEET	REV.
A3	5:1	1/1	B

4 3 2 1