

MATERIAL & FINISH:

1. BODY: BRASS, GOLD PLATED
2. CENTER CONTACT: PHOSPHOR BRONZE, GOLD PLATED
3. OUTER CONTACT: BERYLLIUM COPPER ALLOY, GOLD PLATED
4. INSULATOR: PTFE

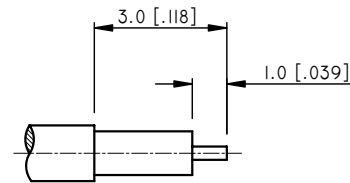
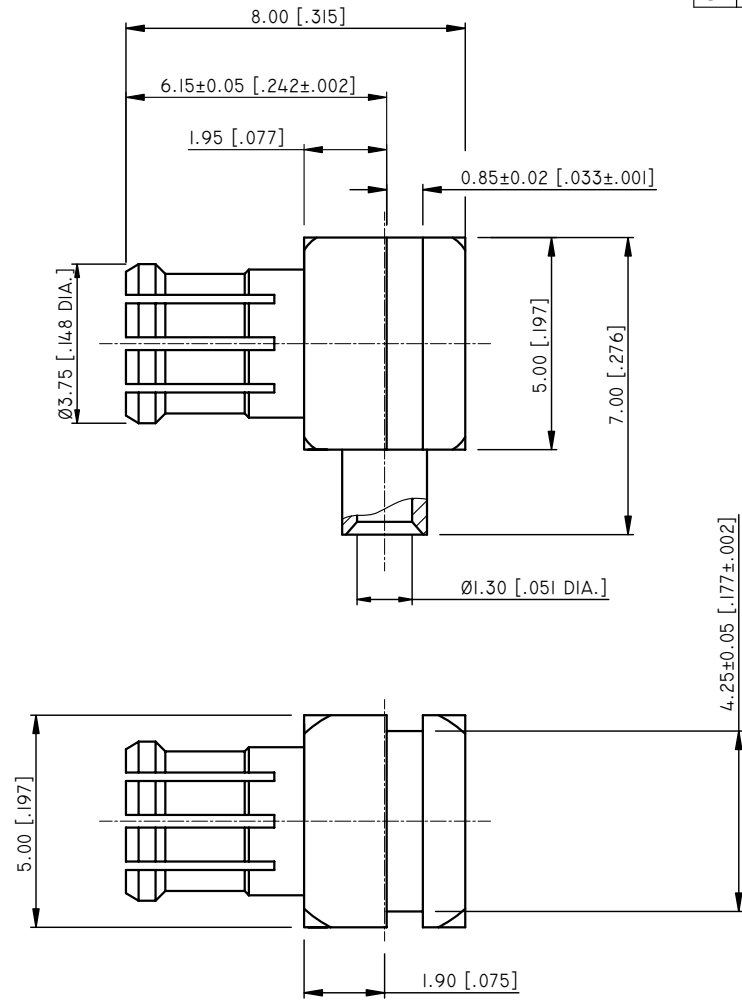
ENVIRONMENTAL DATA:

1. TEMPERATURE RANGE: -55°C~+125°C
2. 2002/95/EC (RoHS): COMPLIANT

ELECTRICAL SPECIFICATIONS:

1. IMPEDANCE: 50 Ω
2. FREQUENCY RANGE: DC~6 GHZ
3. VSWR: 1.35 MAX.

REVISIONS			
REV.	DESCRIPTION	DATE	APPROVED
C	CENTER CONTACT MATERIAL, DIMENSIONS AND TOLERANCE CHANGED	05/20/14	J. QU
D	DIMENSION CHANGED	05/20/14	J. QU



CABLE STRIPPING DIMENSIONS

DRAWN L. YANG	DATE 05/20/14												
CHECKED X. B. YANG	DATE 05/20/14												
APPROVED J. QU	DATE 05/20/14	TITLE MCX RIGHT ANGLE MALE SOLDER FOR .047 CABLE											
<small>UNLESS OTHERWISE SPECIFIED DIMENSIONS ARE IN MILLIMETERS, DIMENSIONS IN [] ARE IN INCHES FOR CUSTOMER REFERENCE ONLY UNLESS OTHERWISE SPECIFIED TOLERANCE ARE:</small>		<small>THESE DRAWINGS AND SPECIFICATIONS ARE THE PROPERTY OF ANOISON ELECTRONICS LTD AND SHOULD NOT BE USED WITHOUT WRITTEN PERMISSION COPYRIGHT © 2013 ANOISON</small>											
<table border="0"> <tr> <td>.XX</td> <td>±0.13 [.005"]</td> </tr> <tr> <td>.X</td> <td>±0.20 [.008"]</td> </tr> <tr> <td>X</td> <td>±0.50 [.019"]</td> </tr> <tr> <td>.X°</td> <td>±1°</td> </tr> <tr> <td>X°</td> <td>±2°</td> </tr> </table>		.XX	±0.13 [.005"]	.X	±0.20 [.008"]	X	±0.50 [.019"]	.X°	±1°	X°	±2°	VIEW 	PART NO. ANO 1321-2032
.XX	±0.13 [.005"]												
.X	±0.20 [.008"]												
X	±0.50 [.019"]												
.X°	±1°												
X°	±2°												
SIZE A3	SCALE 10:1	SHEET 1/1	REV. D										