

4 3 2 1

REVISIONS

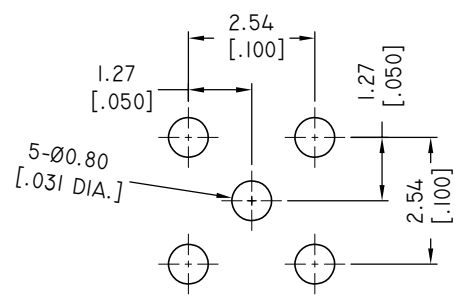
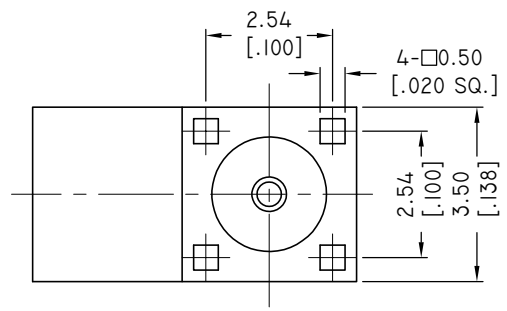
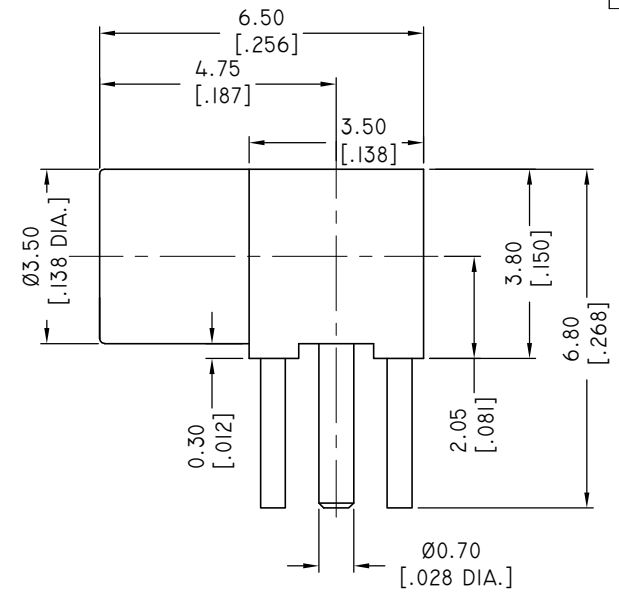
REV.	DESCRIPTION	DATE	APPROVED
A	INITIAL RELEASE	07/16/10	J. QU
B	DRAWING FORMAT CHANGED	08/29/17	J. QU

MATERIAL & FINISH:

- 1 BODY: BRASS, GOLD PLATED
- 2 CENTER CONTACT: BERYLLIUM COPPER ALLOY, GOLD PLATED
- 3 INSULATOR: PTFE

ENVIRONMENTAL DATA:

- 1 TEMPERATURE RANGE: -55°C~+165°C
- 2 2011/65/EU (RoHS): COMPLIANT



DRAWN	W. YANG	DATE	08/29/17
CHECKED	L. YANG	DATE	08/29/17
APPROVED	J. QU	DATE	08/29/17
UNLESS OTHERWISE SPECIFIED DIMENSIONS ARE IN MILLIMETERS, DIMENSIONS IN [] ARE IN INCHES FOR CUSTOMER REFERENCE ONLY UNLESS OTHERWISE SPECIFIED TOLERANCE ARE:		THESE DRAWINGS AND SPECIFICATIONS ARE THE PROPERTY OF ANOISON ELECTRONICS LTD AND SHOULD NOT BE USED WITHOUT WRITTEN PERMISSION COPYRIGHT © 2017 ANOISON ELECTRONICS LTD	
.XX	±0.13 [0.005"]		
.X	±0.20 [0.008"]		
X°	±0.50 [0.019"]		
X°	±1°		
X°	±2°		



TITLE			
MMCX RIGHT ANGLE FEMALE PCB MOUNT			
VIEW		PART NO.	
		ANO 1122-4010	
SIZE	SCALE	SHEET	REV.
A3	10:1	I/I	B

4 3 2 1