

1.0 MATERIAL & FINISH

- 1.1 BODY: BRASS, GOLD PLATED
- 1.2 SPRING LATCH: BERYLLIUM COPPER ALLOY, GOLD PLATED
- 1.3 CENTER CONTACT: PHOSPHOR BRONZE, GOLD PLATED
- 1.4 INSULATOR: PTFE

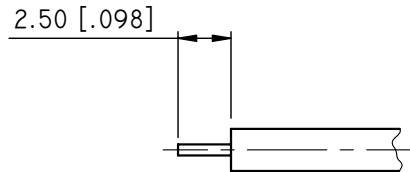
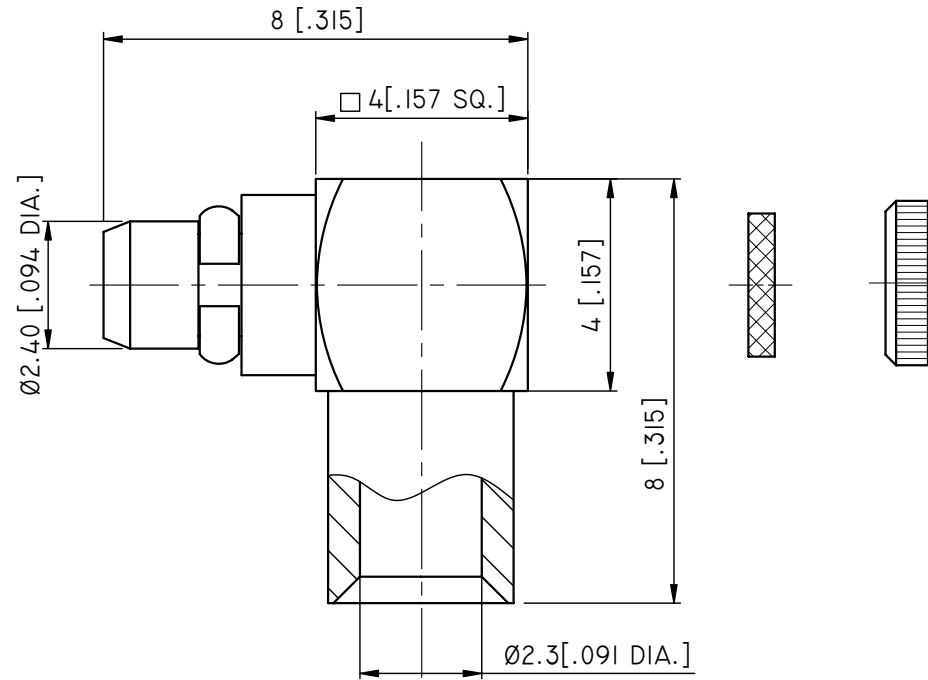
2.0 ENVIRONMENTAL DATA:

- 2.1 TEMPERATURE RANGE: -55°C~+165°C
- 2.2 2002/95/EC (RoHS): COMPLIANT

3.0 ELECTRICAL SPECIFICATIONS:

- 3.1 IMPEDANCE: 50 Ω
- 3.2 FREQUENCY RANGE: DC~6GHZ
- 3.3 VSWR: ≤1.30

REVISIONS			
REV.	DESCRIPTION	DATE	APPROVED
A	INITIAL RELEASE	09/09/10	J. QU
B	STRUCTURE CHANGED	06/07/14	J. QU



CABLE STRIPPING DIMENSIONS

DRAWN L. YANG	DATE 06/07/14		
CHECKED X. B. YANG	DATE 06/07/14		
APPROVED J. QU	DATE 06/07/14		
<small>UNLESS OTHERWISE SPECIFIED DIMENSIONS ARE IN MILLIMETERS, DIMENSIONS IN [] ARE IN INCHES FOR CUSTOMER REFERENCE ONLY UNLESS OTHERWISE SPECIFIED TOLERANCE ARE:</small>		<small>THESE DRAWINGS AND SPECIFICATIONS ARE THE PROPERTY OF ANOISON ELECTRONICS LTD AND SHOULD NOT BE USED WITHOUT WRITTEN PERMISSION COPYRIGHT © 2013 ANOISON</small>	
<small>.XX ±0.13 [.005"] .X ±0.20 [.008"] X ±0.50 [.019"] .X° ±1° X° ±2°</small>		TITLE MMCX RIGHT ANGLE MALE SOLDER FOR .086 CABLE	
		VIEW 	PART NO. ANO I121-2012
		SIZE A3	SCALE 10:1
		SHEET 1/1	REV. B