

4

3

2

1

MATERIAL & FINISH:

- 1 BODY: BRASS, SEE TABLE
- 2 CENTER CONTACT: PHOSPHOR BRONZE, GOLD PLATED
- 3 INSULATOR: PTFE
- 4 SPRING LATCH: BERYLLIUM COPPER ALLOY, SEE TABLE
- 5 INSULATOR: PTFE
- 6 CAP: BRASS, GOLD PLATED
- 7 CRIMP FERRULE: COPPER, NICKEL PLATED

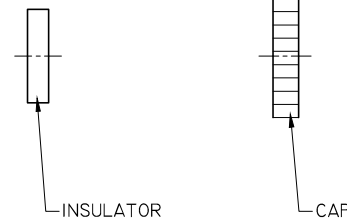
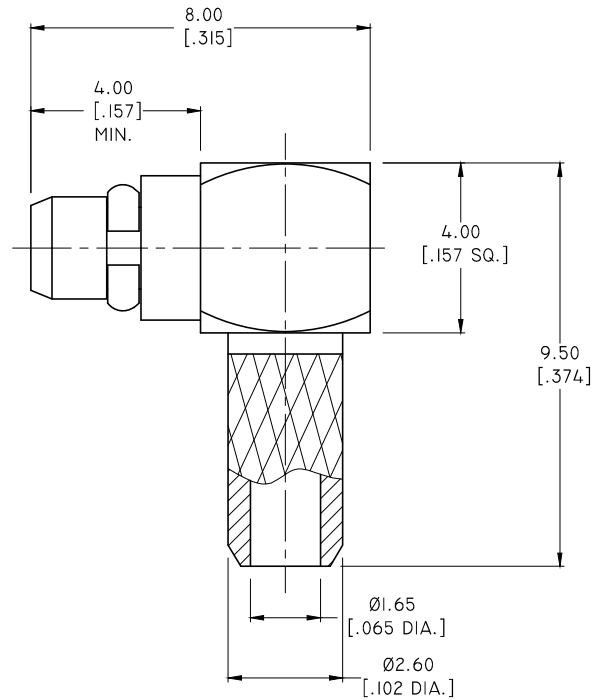
ELECTRICAL DATA:

- 1 IMPEDANCE: 50 Ω
- 2 FREQUENCY RANGE: DC~6 GHz

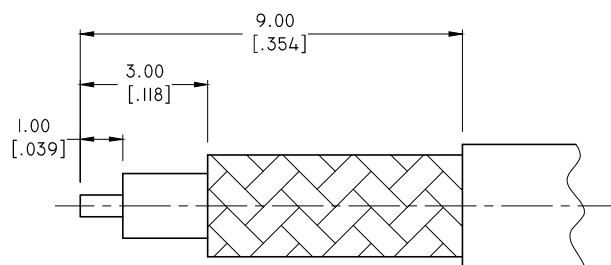
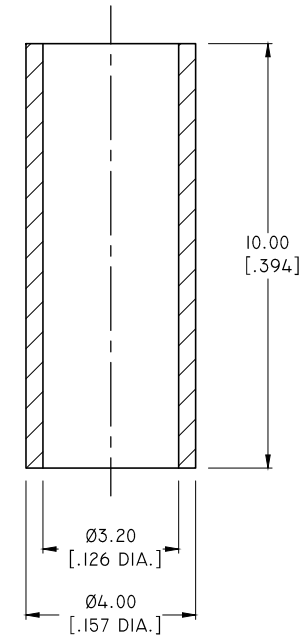
ENVIRONMENTAL DATA:

- 1 TEMPERATURE RANGE: -55°C~+125°C
- 2 2011/65/EU (RoHS): COMPLIANT

REVISIONS			
REV.	DESCRIPTION	DATE	APPROVED
A	RELEASE TO MFG.	07/18/05	J. QU
B	ADD SCHEDULE	02/19/11	J. QU
C	CENTER CONTACT AND SPRING LATCH MATERIAL CHANGED	06/30/12	J. QU
D	CHANGED DRAWING	05/04/18	J. QU

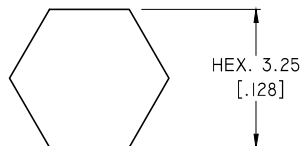


PART	FINISH	PART NUMBER
BODY	GOLD	ANO 1121-2001-1
SPRING LATCH		
BODY	NICKEL	ANO 1121-2001-2
SPRING LATCH		



CABLE STRIPPING DIMENSIONS

HEX. CRIMP TOOL



CRIMP WIDTH: 7.5 [.295]

DRAWN	W. YANG	DATE	05/04/18
CHECKED	X. B. YANG	DATE	05/04/18
APPROVED	J. QU	DATE	05/04/18
UNLESS OTHERWISE SPECIFIED DIMENSIONS ARE IN MILLIMETERS. DIMENSIONS IN [] ARE IN INCHES FOR CUSTOMER REFERENCE ONLY UNLESS OTHERWISE SPECIFIED TOLERANCE ARE:		THESE DRAWINGS AND SPECIFICATIONS ARE THE PROPERTY OF ANOISON ELECTRONICS LTD AND SHOULD NOT BE USED WITHOUT WRITTEN PERMISSION COPYRIGHT © 2018 ANOISON ELECTRONICS LTD	
.XX	+0.13 [.005"]		
.X	+0.20 [.008"]		
X	+0.50 [.019"]		
.X°	±1°		
X°	±2°		



TITLE
MMCX RIGHT ANGLE PLUG CRIMP FOR
LMRI00/RG316/RG174 CABLE

VIEW	PART NO. ANO 1121-2001		
	SIZE A3	SCALE 8:1	SHEET 1/1
			REV. D