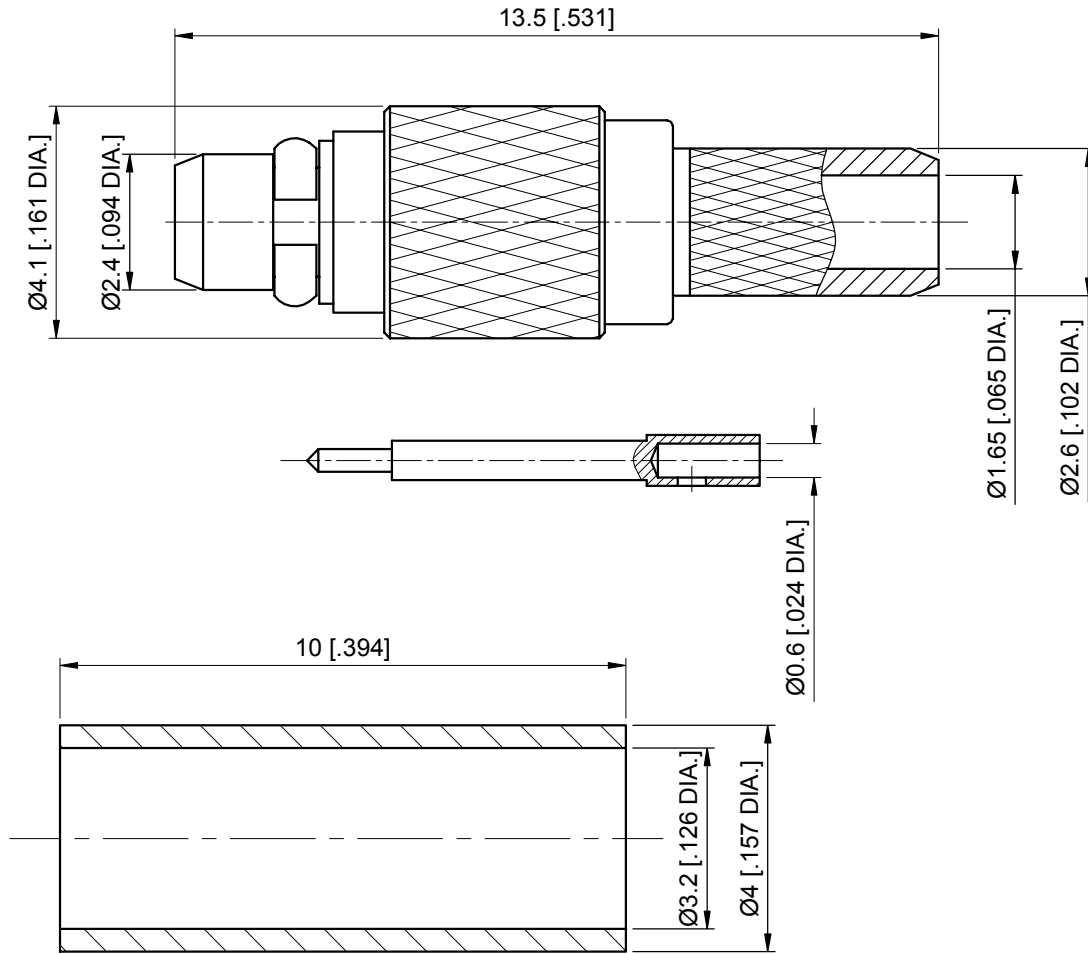
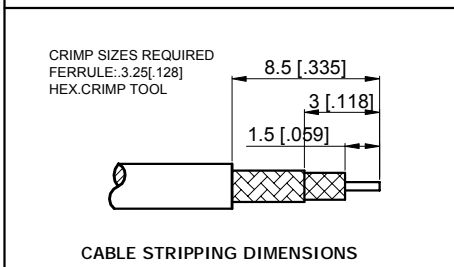


| DESCRIPTION    | MATERIAL               | FINISH       |
|----------------|------------------------|--------------|
| Center Contact | Brass                  | Gold         |
| Body           | Brass                  | See Schedule |
| Spring Latch   | Beryllium Copper Alloy | See Schedule |
| Crimp Ferrule  | Copper                 | Nickel       |
| Insulator      | PTFE                   | —            |



| Part         | Finish | Part Number     |
|--------------|--------|-----------------|
| Body         | Gold   | ANO 1111-2006-1 |
| Spring Latch |        |                 |
| Body         | Nickel | ANO 1111-2006-2 |
| Spring Latch |        |                 |



**NOTES:**

1. ALL SPECIFICATIONS ARE SUBJECT TO CHANGE WITHOUT NOTICE AT ANY TIME
2. CUSTOMER OUTLINE DRAWING FOR REFERENCE ONLY

|                 |        |          |     |                           |
|-----------------|--------|----------|-----|---------------------------|
| Add Schedule    | —      | 02/18/11 | B   | Drawn: Z. Shen 02/18/11   |
| Release to Mfg. | —      | 07/17/08 | A   | Checked: L. Yang 02/18/11 |
| Description     | Ecn.No | Date     | Rev | Approved: J. Qu 02/18/11  |

Title:

**MMCX Straight Male Crimp for LMR100/RG174/RG316 Cable**

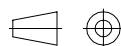


Unless otherwise specified dimensions are in millimeters, dimensions in [ ] are in inches for customer reference only.

Unless Otherwise Specified tolerance are:

- .XX ±0.13 [.005"]
- .X ±0.20 [.008"]
- X ±0.50 [.019"]
- X° ±1°
- X° ±2°

View:



Part No:

**ANO 1111-2006**

|          |            |            |        |
|----------|------------|------------|--------|
| Size: A4 | Scale: 8:1 | Sheet: 1/1 | Rev: B |
|----------|------------|------------|--------|