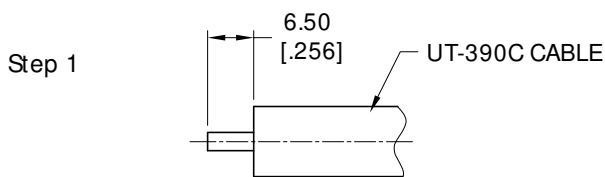
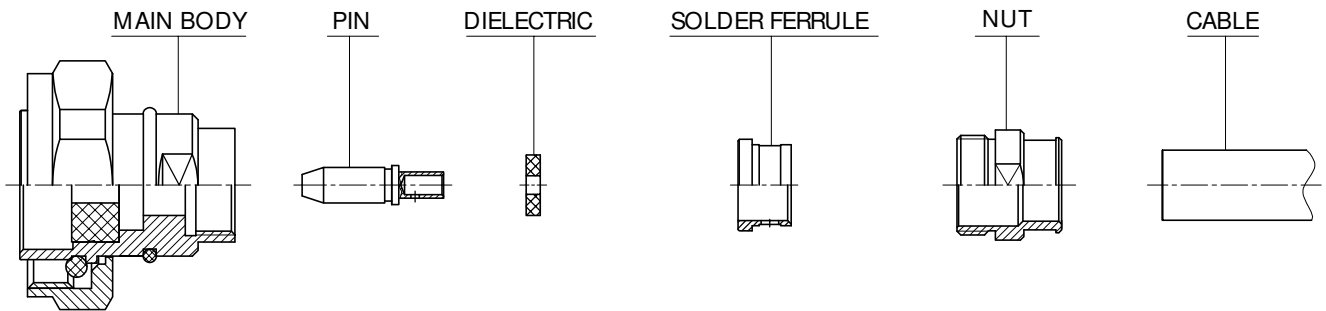
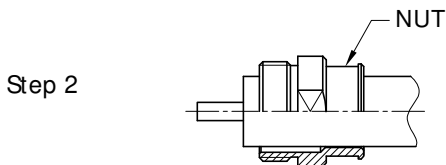


P/N: ANO 5611-2078

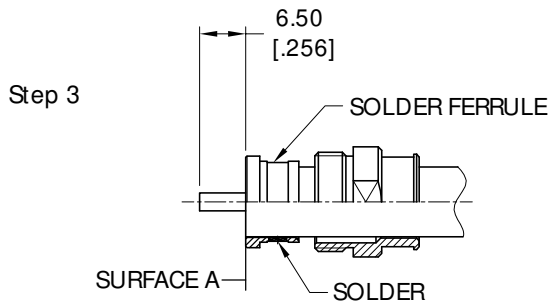
Description: 7/16 STRAIGHT MALE SOLDER/CLAMP FOR UT-390C CABLE



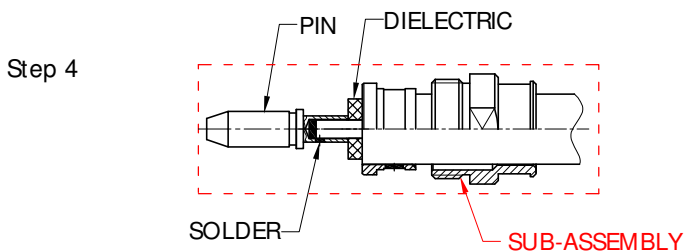
Step 1
a. Strip the cable according to the dimensions, as shown.



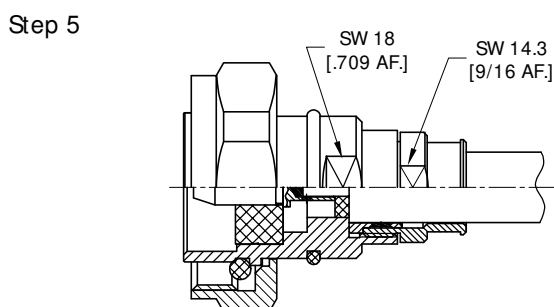
Step 2
a. Slide the body onto cable, as shown.



Step 3
a. Insert the cable into the solder ferrule, then solder the solder ferrule onto the cable, as shown.
b. Trim cable dielectric flush to surface "A", as shown.



Step 4
a. Insert the cable into the dielectric & pin
b. solder pin onto the cable, as shown.



Step 5
a. Screw **sub-assembly** into the main body.
(Recommended coupling torque **2.6 NM**)