

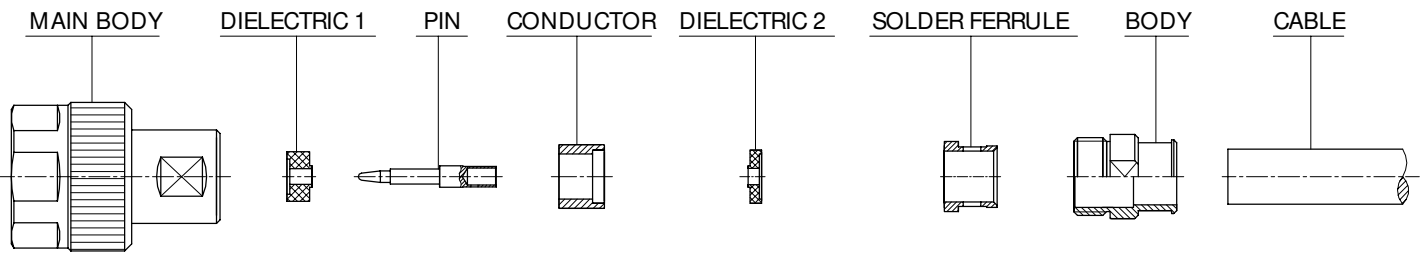
ASSEMBLY INSTRUCTIONS

AI 5127

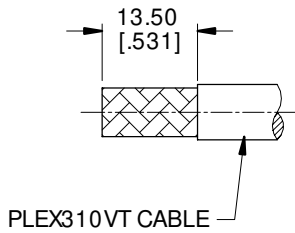


P/N: ANO 5111-2309

Description: N STRAIGHT MALE SOLDER/SOLDER FOR PLEX310 CABLE



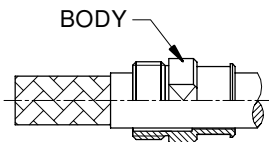
Step 1



Step 1

- a. Strip the cable according to the dimensions, as shown.
- b. Tin inner braid of cable.

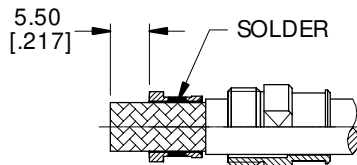
Step 2



Step 2

- a. Slide the body onto cable, as shown.

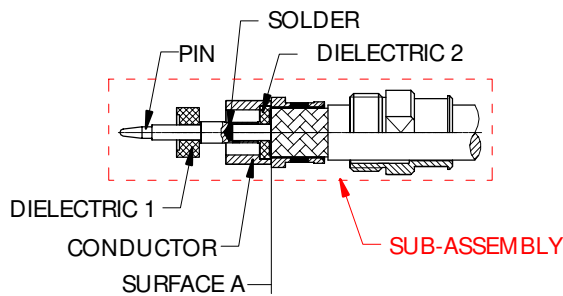
Step 3



Step 3

- a. Insert the cable into the solder ferrule, then solder the solder ferrule onto the cable, as shown.

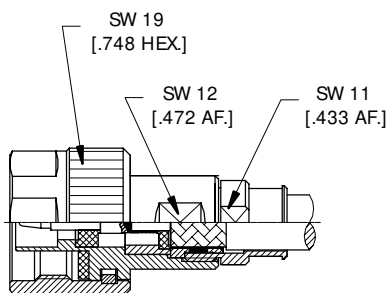
Step 4



Step 4

- a. Trim cable dielectric & braid flush to surface "A", as shown.
- b. Insert the cable into the dielectric 2 & pin, then solder pin onto the cable, as shown.
- c. Insert the dielectric 2 into the conductor, as shown.
- d. Insert the pin into the dielectric 1, as shown.

Step 5



Step 5

- a. Screw **sub-assembly** into the main body. (Recommended coupling torque **3.95** NM)