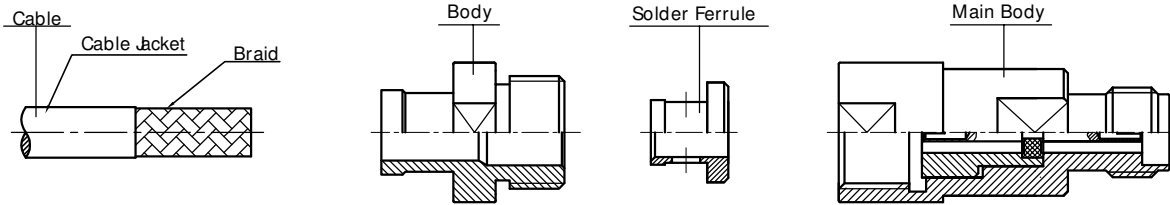
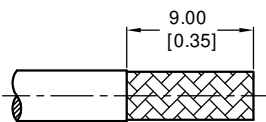


P/N: ANO 2912-2092

Description: 2.92MM Straight Female Solder for PLEX140 Cable



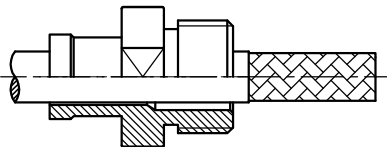
STEP 1



STEP 1

- a. Strip the cable according to the dimensions, as shown.
- b. Tin inner braid of cable.

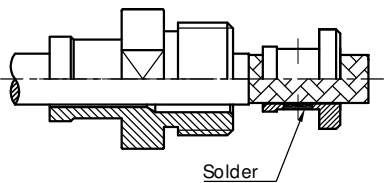
STEP 2



STEP 2

Slide the body over cable, as shown.

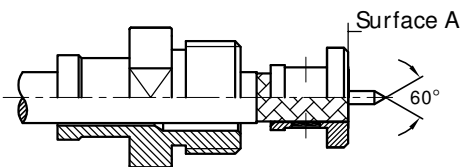
STEP 3



STEP 3

Insert the cable into the solder ferrule, then solder the solder ferrule onto the cable, as shown.

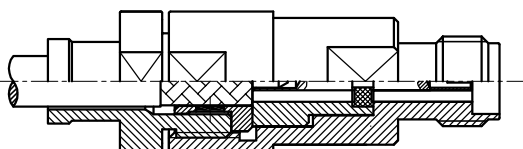
STEP 4



STEP 4

- a. Trim cable dielectric & foil flush to surface "A", as shown.
- b. File blunt end of cable inner conductor to a 60° cone, as shown.

STEP 5



STEP 5

Insert Cable/Contact sub-assembly into connector, tighten Body. (Recommended coupling torque 0.9 N.m)