

4

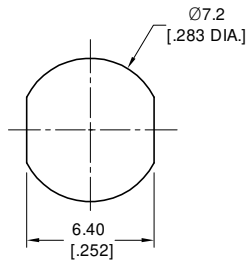
3

2

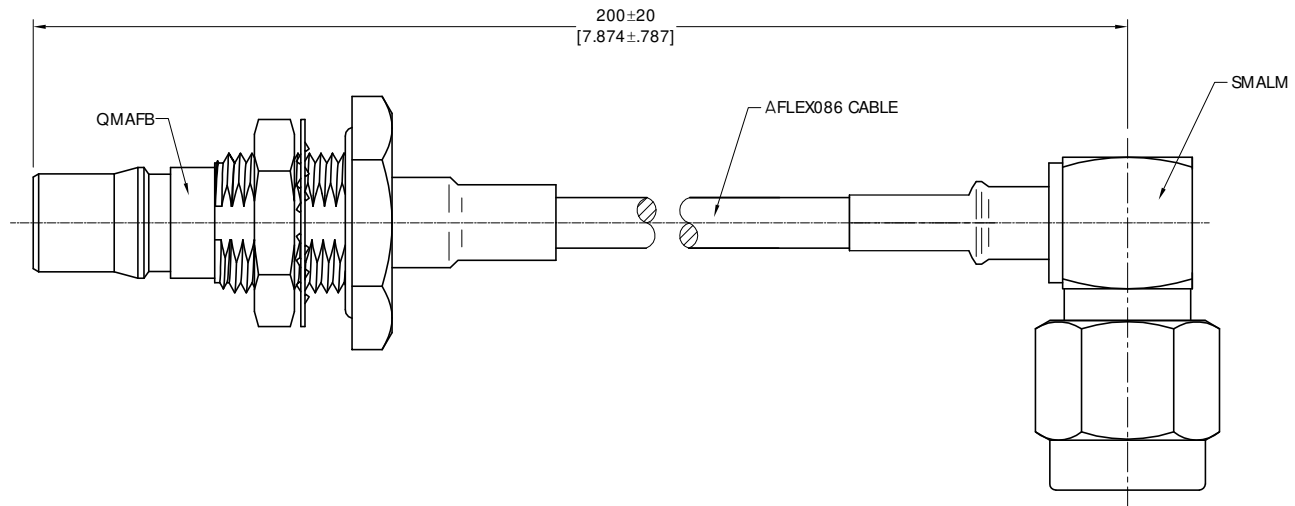
1

ELECTRICAL DATA:

- 1 IMPEDANCE: 50 OHMS
- 2 FREQUENCY RANGE: DC~18 GHz
- 3 VSWR: 1.20 MAX @ 6 GHz
- 4 INSERTION LOSS: 1.15 dB MAX @ 12 GHz



RECOMMENDED MOUNTING HOLE



TITLE
 CABLE ASSEMBLY, QMA FEMALE BULKHEAD TO SMA
 R/A MALE, AFLEX086 CABLE, 200MM

- NOTES:
 1. UNLESS OTHERWISE SPECIFIED ALL DIMENSIONS ARE NOMINAL.
 2. ALL SPECIFICATIONS ARE SUBJECT TO CHANGED WITHOUT NOTICE AT ANY TIME
 3. DIMENSIONS ARE IN MILLIMETERS, DIMENSIONS IN [] ARE IN INCHES
 4. LENGTH TOLERANCE IS ±2%.

VIEW	PART NO. AF086-QMAFB-SMALM-200MM			
	SIZE A3	SCALE 4:1	SHEET 1/1	REV. A

4

3

2

1