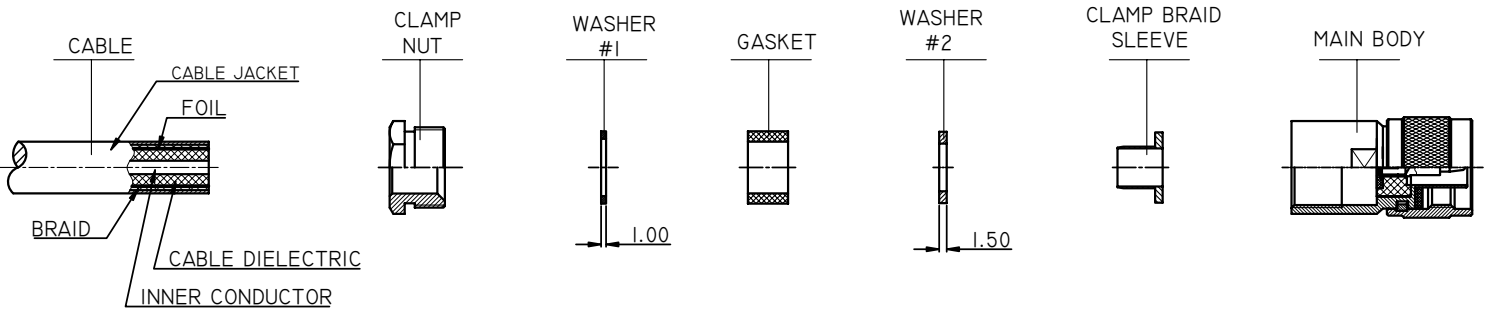
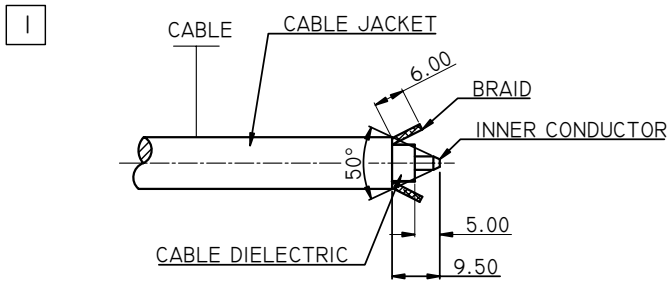


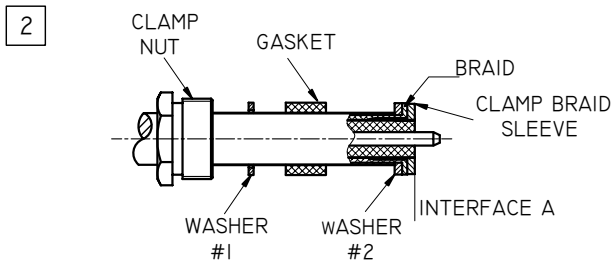
N STRAIGHT MALE CLAMP FOR LMR400 CABLE



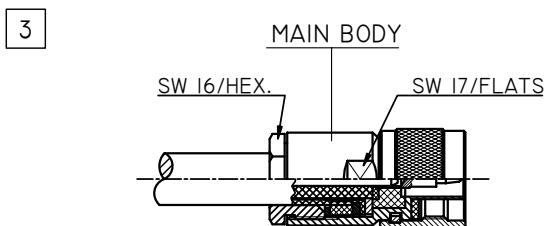
CONNECTOR	ANO 5111-2205
-----------	---------------



1.1 STRIP THE CABLE ACCORDING TO THE DIMENSIONS, AS SHOWN.



- 2.1 SLIDE THE CLAMP NUT, WASHER #1 AND GASKET ONTO THE CABLE.
- 2.2 SLIDE WASHER #2 OVER THE BRAID.
- 2.3 SLIDE CLAMP BRAID SLEEVE UNDER BRAID.
- 2.4 FOLD BACK BRAID AND TRIM OFF EXCESS OF BRAID.
- 2.5 TRIM BACK DIELECTRIC AS INTERFACE AS SHOWN.



- 3.1 SCREW SUB-ASSEMBLY INTO THE CONNECTOR BODY. RECOMMENDED COUPLING TORQUE 70.87 IN.LB-800 NCM.