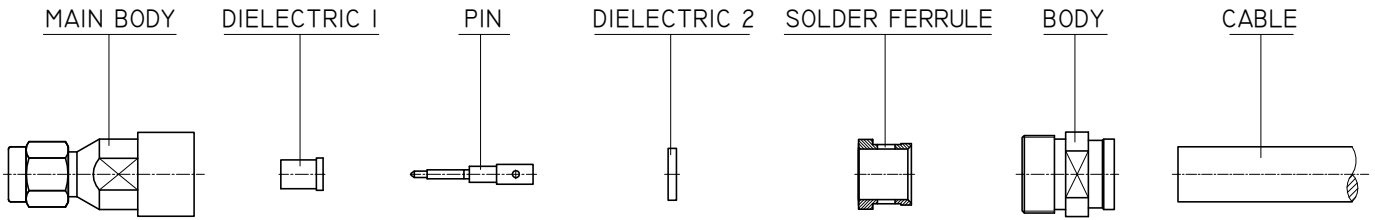
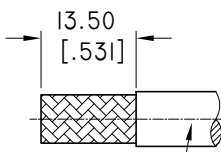


# ASSEMBLY INSTRUCTIONS

## SMA STRAIGHT MALE SOLDER FOR PLEX310VT CABLE

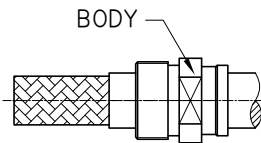


1

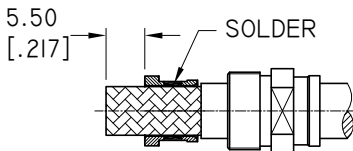


PLEX310VT CABLE

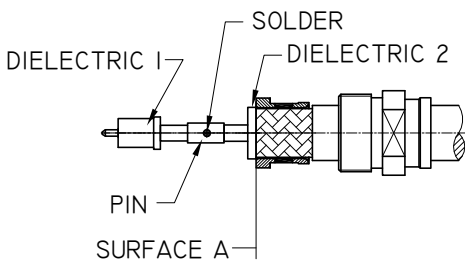
2



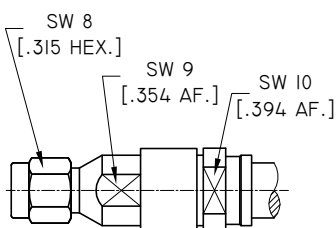
3



4



5



CONNECTOR

ANO 2111-2540

- 1.1 STRIP THE CABLE ACCORDING TO THE DIMENSIONS, AS SHOWN.
- 1.2 TIN INNER BRAID OF CABLE.

- 2.1 SLIDE THE BODY OVER CABLE, AS SHOWN.

- 3.1 INSERT THE CABLE INTO THE SOLDER FERRULE, THEN SOLDER THE SOLDER FERRULE ONTO THE CABLE, AS SHOWN.

- 4.1 TRIM CABLE DIELECTRIC & BRAID FLUSH TO SURFACE "A", AS SHOWN.
- 4.2 INSERT THE CABLE INTO THE DIELECTRIC 2 & PIN, THEN SOLDER PIN ONTO THE CABLE, AS SHOWN.
- 4.3 INSERT THE PIN INTO THE DIELECTRIC 1, AS SHOWN.

- 5.1 SCREW SUB-ASSEMBLY INTO THE MAIN BODY. (RECOMMENDED COUPLING TORQUE 20 NM).