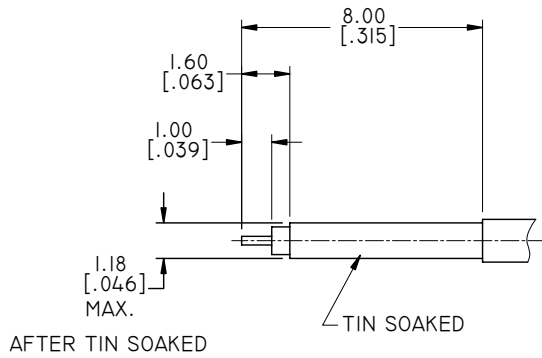
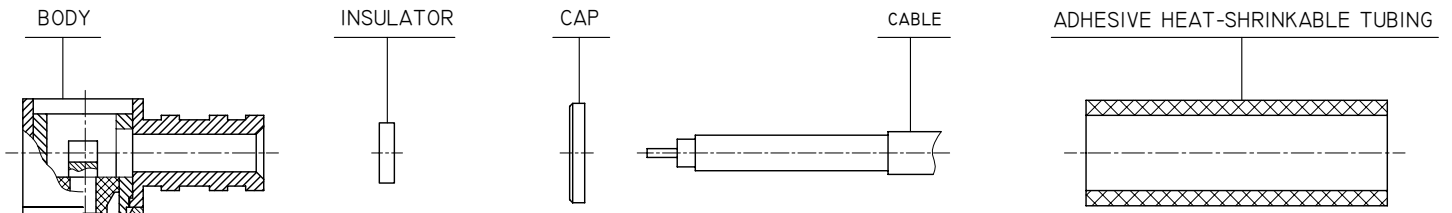


SMP RIGHT ANGLE FEMALE SOLDER FOR MOLEX 047SC-2901 CABLE

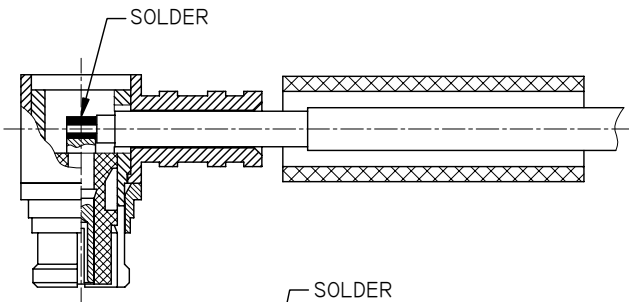


CONNECTOR	ANO 9322-2056
-----------	---------------

1

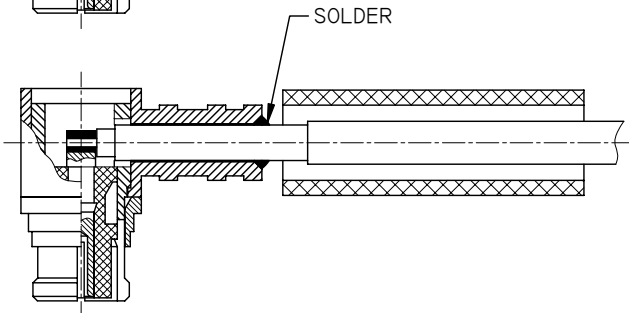
- 1.1 STRIP THE CABLE ACCORDING TO THE DIMENSIONS AS SHOWN.
- 1.2 DIPPED TIN.

2



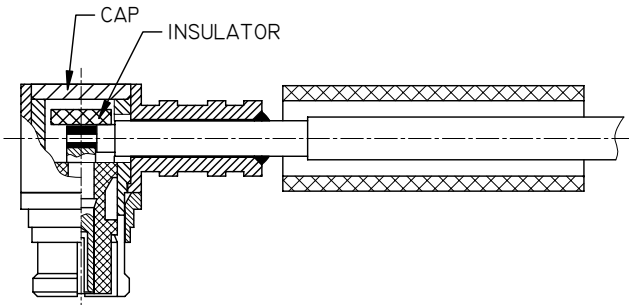
- 2.1 SLIDE ONTO THE CABLE THE ADHESIVE HEAT-SHRINKABLE TUBING.
- 2.2 SLIDE THE CABLE INTO THE BODY UNTIL BOTTOMS AGAINST INSULATOR.
- 2.3 SOLDER INNER CONDUCTOR AS SHOWN.

3



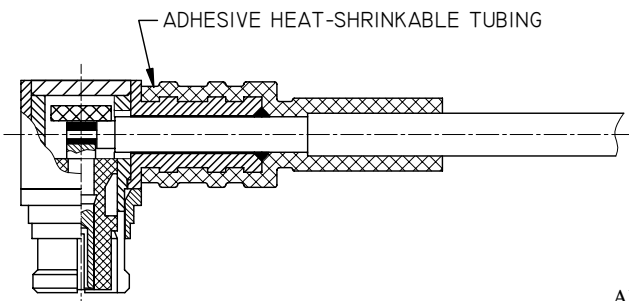
- 3.1 SOLDER OUTER CONTACT.

4



- 4.1 PLACE THE INSULATOR AND THE CAP.
- 4.2 PRESS THE CAP FLUSH OR SLIGHTLY BELLOWS SURFACE OF BODY ASSEMBLY.

5



- 5.1 SLIDE ADHESIVE HEAT-SHRINKABLE TUBING OVER THE BODY.
- 5.2 SHRINK THE ADHESIVE HEAT-SHRINKABLE TUBING.