

### 2.4mm Design Features

- Excellent performance up to 50GHz
- Low VSWR and insertion loss
- Rugged construction for reliability
- Mechanically compatible with 1.85mm connector series

### Main Specifications

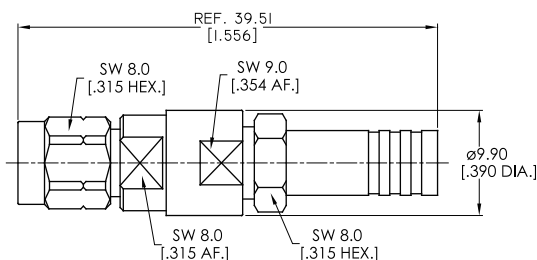
- Impedance: 50Ω
- Frequency range: DC~50GHz
- VSWR: ≤1.15
- Dielectric withstanding voltage(V.R.M.S.): 750V
- Durability: ≥500

### Material/Plating

- Body: Stainless steel Passivated
- Center Conductor: Beryllium copper Gold
- Insulators: PEI

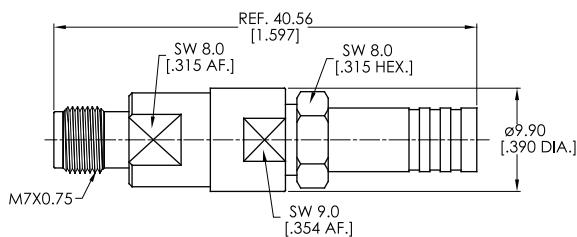
### Straight Cable, Plug (Male)

Connector No.	Cable	Body Plating
<b>ANO 2211-2013</b>	PLEX-130P	Passivated



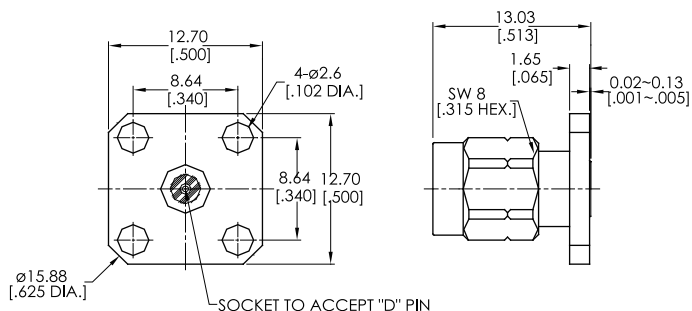
### Straight Cable, Jack (Female)

Connector No.	Cable	Body Plating
<b>ANO 2212-2016</b>	PLEX-130P	Passivated



### Flange Mount, Plug (Male)

Connector No.	D	MAX. Pin Depth
<b>ANO 2211-3011-1</b>	0.23	1.65
<b>ANO 2211-3011-2</b>	0.30	2.16
<b>ANO 2211-3011-3</b>	0.51	1.65



# 2.4mm Connectors Series



Connector No.	D	MAX. Pin Depth
<a href="#">ANO 2211-3018-1</a>	0.23	1.65
<a href="#">ANO 2211-3018-2</a>	0.30	2.00
<a href="#">ANO 2211-3018-3</a>	0.51	2.00

Connector No.	D	MAX. Pin Depth
<a href="#">ANO 2211-3019-1</a>	0.23	1.65
<a href="#">ANO 2211-3019-2</a>	0.30	2.00
<a href="#">ANO 2211-3019-3</a>	0.51	2.00

Connector No.	D	MAX. Pin Depth
<a href="#">ANO 2211-3020-1</a>	0.23	1.65
<a href="#">ANO 2211-3020-2</a>	0.30	2.00
<a href="#">ANO 2211-3020-3</a>	0.51	2.00

Connector No.	D	MAX. Pin Depth
<a href="#">ANO 2211-3021-1</a>	0.23	1.65
<a href="#">ANO 2211-3021-2</a>	0.30	2.00
<a href="#">ANO 2211-3021-3</a>	0.51	2.00

**Flange Mount, Jack (Female)**

Connector No.	D	MAX. Pin Depth
<a href="#">ANO 2212-3005-1</a>	0.23	1.65
<a href="#">ANO 2212-3005-2</a>	0.30	2.16
<a href="#">ANO 2212-3005-3</a>	0.51	1.65
<a href="#">ANO 2212-3005-4</a>	0.38	2.00
<a href="#">ANO 2212-3005-5</a>	0.46	2.00

# 2.4mm Connectors Series



Connector No.	D	MAX. Pin Depth
<a href="#">ANO 2212-3006-1</a>	0.23	1.65
<a href="#">ANO 2212-3006-2</a>	0.30	2.16
<a href="#">ANO 2212-3006-3</a>	0.51	1.65
<a href="#">ANO 2212-3006-4</a>	0.38	2.00
<a href="#">ANO 2212-3006-5</a>	0.46	2.00

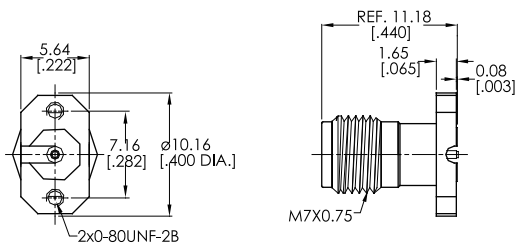
Connector No.	D	MAX. Pin Depth
<a href="#">ANO 2212-3009-1</a>	0.23	1.65
<a href="#">ANO 2212-3009-2</a>	0.30	2.16
<a href="#">ANO 2212-3009-3</a>	0.51	1.65
<a href="#">ANO 2212-3009-4</a>	0.38	2.00
<a href="#">ANO 2212-3009-5</a>	0.46	2.00

Connector No.	D	MAX. Pin Depth
<a href="#">ANO 2212-3012-1</a>	0.23	1.65
<a href="#">ANO 2212-3012-2</a>	0.30	1.65
<a href="#">ANO 2212-3012-3</a>	0.38	1.65
<a href="#">ANO 2212-3012-4</a>	0.51	1.65

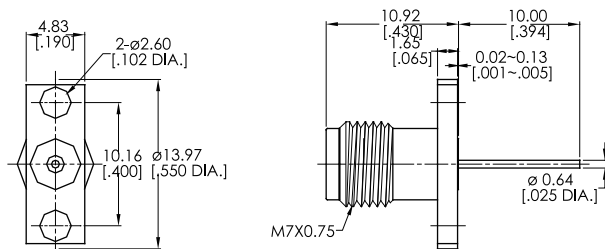
Connector No.	Body Plating
<a href="#">ANO 2212-3015</a>	Passivated

Connector No.	D	MAX. Pin Depth
<a href="#">ANO 2212-3017-1</a>	0.23	1.65
<a href="#">ANO 2212-3017-2</a>	0.30	2.00
<a href="#">ANO 2212-3017-3</a>	0.51	2.00

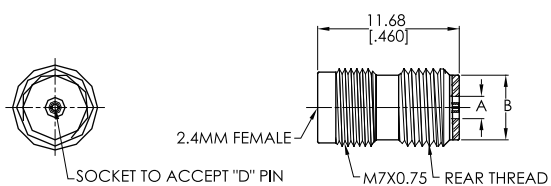
Connector No.	Body Plating
<b>ANO 2212-3024</b>	Passivated



Connector No.	Body Plating
<b>ANO 2212-3025</b>	Passivated



### Rear Thread-In, Jack (Female)



Connector No.	D	MAX. Pin Depth	A	B	Rear Thread
<b>ANO 2212-5010-1</b>	0.23	1.65	1.17	5.33	1/4-36UNS-2A
<b>ANO 2212-5010-2</b>	0.23	1.65	1.17	5.08	M6x0.75-6g
<b>ANO 2212-5010-3</b>	0.30	2.00	1.38	5.33	1/4-36UNS-2A
<b>ANO 2212-5010-4</b>	0.38	2.00	1.60	5.33	1/4-36UNS-2A
<b>ANO 2212-5010-5</b>	0.46	2.00	1.82	5.33	1/4-36UNS-2A
<b>ANO 2212-5010-5</b>	0.51	2.00	1.84	5.33	1/4-36UNS-2A