

### 1.85mm Design Features

- Excellent performance up to 65GHz
- Low VSWR and insertion loss
- Rugged construction for reliability
- Mechanically compatible with 2.4mm connector series

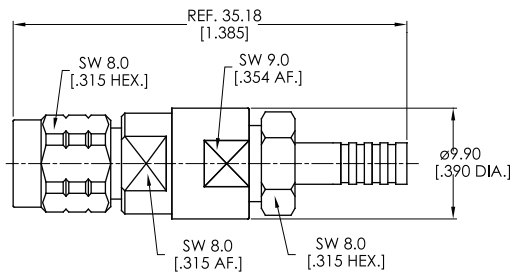
### Main Specifications

- Impedance: 50Ω
- Frequency range: DC~65GHz
- VSWR: ≤1.25
- Dielectric withstanding voltage(V.R.M.S.): 750V
- Durability: ≥500

### Material/Plating

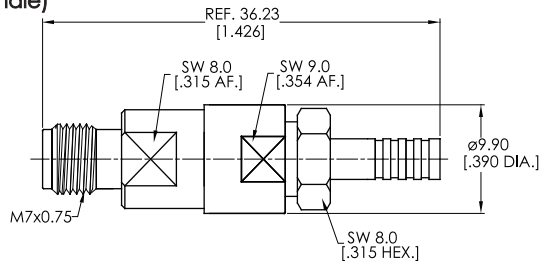
- Body: Stainless steel Passivated
- Center Conductor: Beryllium copper Gold
- Insulators: PEI

#### Straight Cable, Plug (Male)



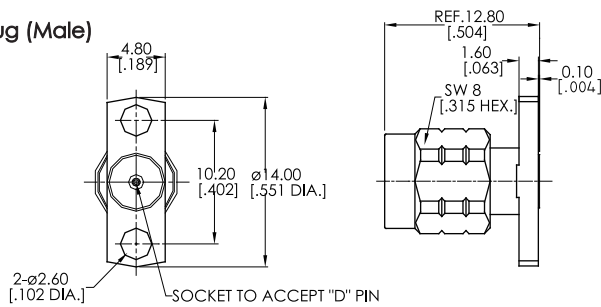
Connector No.	Cable	Body Plating
<b>ANO 6211-2003</b>	CXN3506	Passivation

#### Straight Cable, Jack (Female)

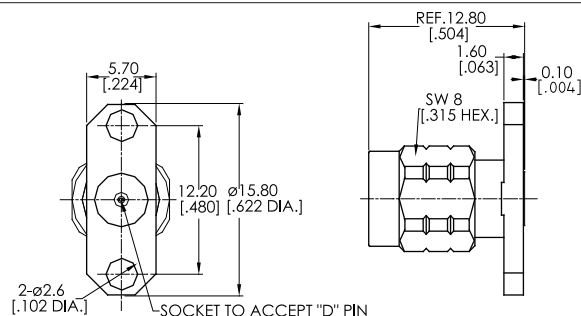


Connector No.	Cable	Body Plating
<b>ANO 6212-2004</b>	CXN3506	Passivation

#### Flange Mount, Plug (Male)



Connector No.	D	MAX. Pin Depth
<b>ANO6211-3010-1</b>	0.23	2.0
<b>ANO6211-3010-2</b>	0.30	2.0



Connector No.	D	MAX. Pin Depth
<b>ANO6211-3011-1</b>	0.23	2.00
<b>ANO6211-3011-2</b>	0.30	2.00

Connector No.	D	MAX. Pin Depth
<b>ANO6211-3012-1</b>	0.23	2.00
<b>ANO6211-3012-2</b>	0.30	2.00

**Flange Mount, Jack (Female)**

Connector No.	D	MAX. Pin Depth
<b>ANO6212-3013-1</b>	0.23	2.0
<b>ANO6212-3013-2</b>	0.30	2.0

Connector No.	D	MAX. Pin Depth
<b>ANO6212-3014-1</b>	0.23	2.00
<b>ANO6212-3014-2</b>	0.30	2.00

Connector No.	D	MAX. Pin Depth
<b>ANO6212-3015-1</b>	0.23	2.0
<b>ANO6212-3015-2</b>	0.30	2.0

Connector No.	D	MAX. Pin Depth
<b>ANO6212-3020-1</b>	0.23	2.00
<b>ANO6212-3020-2</b>	0.30	2.00